

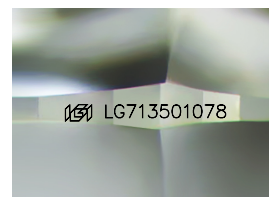
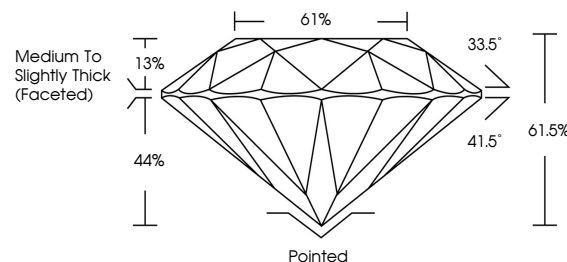


ELECTRONIC COPY

LABORATORY GROWN DIAMOND REPORT

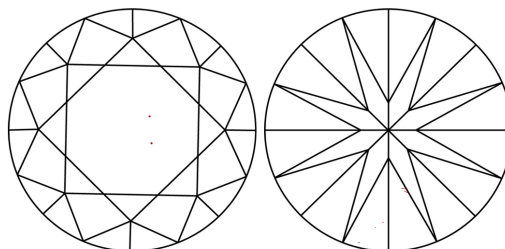
LG713501078
Report verification at lgi.org

PROPORTIONS



Sample Image Used

CLARITY CHARACTERISTICS



KEY TO SYMBOLS

Red symbols indicate internal characteristics.
Green symbols indicate external characteristics.

COLOR

D E F G H I J Faint Very Light Light

CLARITY

IF WS¹⁻² VS¹⁻² SI¹⁻² |¹⁻³

Internally Flawless	Very Very Slightly Included	Very Slightly Included	Slightly Included	Included
------------------------	--------------------------------	---------------------------	----------------------	----------



June 3, 2025

IGI Report Number **LG713501078**Description **LABORATORY GROWN DIAMOND**Shape and Cutting Style **ROUND BRILLIANT**

Measurements 7.06 - 7.09 X 4.35 MM

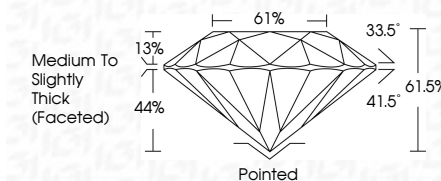
GRADING RESULTS

Carat Weight **1.35 CARAT**

Color Grade D

Clarity Grade VS 1

Cut Grade **EXCELLENT**



ADDITIONAL GRADING INFORMATION

Polish **EXCELLENT**Symmetry **EXCELLENT**Fluorescence **NONE**Inscription(s) LG713501078

Comments: This Laboratory Grown Diamond was created by Chemical Vapor Deposition (CVD) growth process.
Type IIa



© IGI 2020, International Gemological Institute

FD - 10 20

www.igi.org

THIS DOCUMENT WAS PRODUCED WITH THE FOLLOWING SECURITY MEASURES: SPECIAL DOCUMENT PAPER, INK SCREENS, WATERMARK, BACKGROUND DESIGNS, HOLOGRAM AND OTHER SECURITY FEATURES NOT LISTED AND DO EXCEED DOCUMENT SECURITY INDUSTRY GUIDELINE

June 3, 2025
IGI Report No LG713501078
ROUND BRILLIANT

7.06 - 7.09 X 4.35 MM	Color Grade	VS 1	1.35 CARAT
Carat Weight	Color Grade	EXCELLENT	D
Cut Grade	Color Grade	61.05%	
Depth	Table	Medium to Slightly Thick (Faceted)	
Girdle	Girdle	Pointed	
		EXCELLENT	
	Symmetry	EXCELLENT	
	Fluorescence	NONE	

Comments:
This Laboratory Grown Diamond was
created by Chemical Vapor Deposition
(CVD) growth process.