



ELECTRONIC COPY

LG712591036
Report verification at igi.org



June 4, 2025

IGI Report Number **LG712591036**

Description **LABORATORY GROWN DIAMOND**

Shape and Cutting Style **ROUND CORNERED
RECTANGULAR MODIFIED
BRILLIANT**

Measurements **8.60 X 5.50 X 3.51 MM**

GRADING RESULTS

Carat Weight **1.52 CARAT**

Color Grade **E**

Clarity Grade **VVS 2**

LABORATORY GROWN DIAMOND REPORT

June 4, 2025

IGI Report Number **LG712591036**

Description **LABORATORY GROWN DIAMOND**

Shape and Cutting Style **ROUND CORNERED
RECTANGULAR MODIFIED
BRILLIANT**

Measurements **8.60 X 5.50 X 3.51 MM**

GRADING RESULTS

Carat Weight **1.52 CARAT**

Color Grade **E**

Clarity Grade **VVS 2**

ADDITIONAL GRADING INFORMATION

Polish **EXCELLENT**

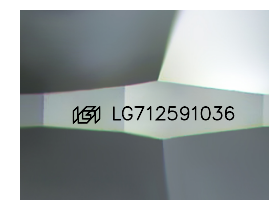
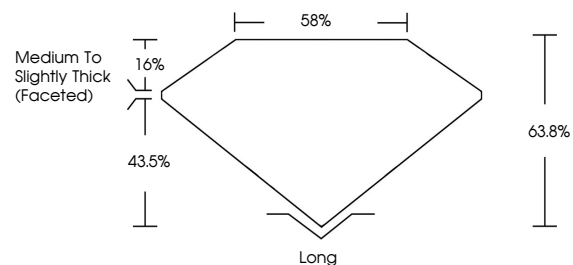
Symmetry **EXCELLENT**

Fluorescence **NONE**

Inscription(s) **IGI LG712591036**

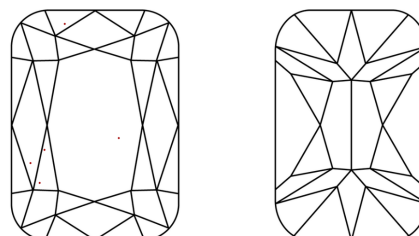
Comments: This Laboratory Grown Diamond was created by Chemical Vapor Deposition (CVD) growth process. Type IIa

PROPORTIONS



Sample Image Used

CLARITY CHARACTERISTICS



KEY TO SYMBOLS

Red symbols indicate internal characteristics.
Green symbols indicate external characteristics.

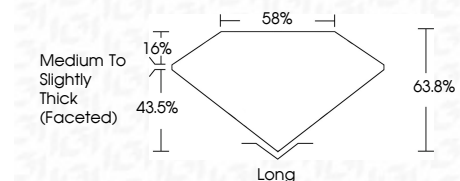
COLOR

D E F G H I J Faint Very Light Light

CLARITY

IF VS¹⁻² VS¹⁻² SI¹⁻² I¹⁻³

Internally Flawless Very Very Slightly Included Very Slightly Included Slightly Included Included



ADDITIONAL GRADING INFORMATION

Polish **EXCELLENT**

Symmetry **EXCELLENT**

Fluorescence **NONE**

Inscription(s) **IGI LG712591036**

Comments: This Laboratory Grown Diamond was created by Chemical Vapor Deposition (CVD) growth process. Type IIa



June 4, 2025	IGI Report No LG712591036	ROUND CORNERED RECT. MODIFIED BRILLIANT	8.60 X 5.50 X 3.51 MM	1.52 CARAT	E	VVS 2	63.8%	58%	Medium to Slightly Thick (Faceted)	Long	EXCELLENT	EXCELLENT	NONE	IGI LG712591036
				Carat Weight	Color Grade	Clarity Grade	Depth	Table	Grades	Culet	Polish	Symmetry	Fluorescence	Inscription(s)

Comments: This Laboratory Grown Diamond was created by Chemical Vapor Deposition (CVD) growth process. Type IIa