



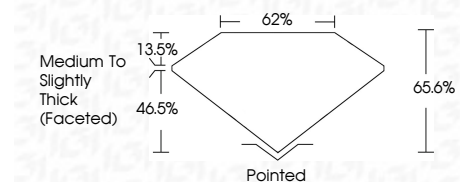
ELECTRONIC COPY

LG712590952
Report verification at igi.org



June 6, 2025
IGI Report Number **LG712590952**
Description **LABORATORY GROWN DIAMOND**
Shape and Cutting Style **HALF MOON BRILLIANT**
Measurements **9.45 X 6.17 X 4.05 MM**

GRADING RESULTS
Carat Weight **1.58 CARAT**
Color Grade **E**
Clarity Grade **VVS 2**



ADDITIONAL GRADING INFORMATION
Polish **EXCELLENT**
Symmetry **EXCELLENT**
Fluorescence **NONE**
Inscription(s) **(IGI) LG712590952**
Comments: This Laboratory Grown Diamond was created by Chemical Vapor Deposition (CVD) growth process. Type IIa



June 6, 2025
IGI Report No **LG712590952**
HALF MOON BRILLIANT
9.45 X 6.17 X 4.05 MM
1.58 CARAT
E
VVS 2
65.6%
62%
Medium to Slightly Thick (Faceted)
Pointed
EXCELLENT
EXCELLENT
NONE
(IGI) LG712590952
Comments: This Laboratory Grown Diamond was created by Chemical Vapor Deposition (CVD) growth process. Type IIa

LABORATORY GROWN DIAMOND REPORT

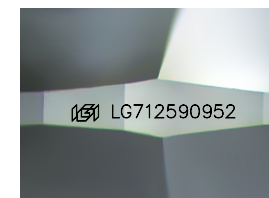
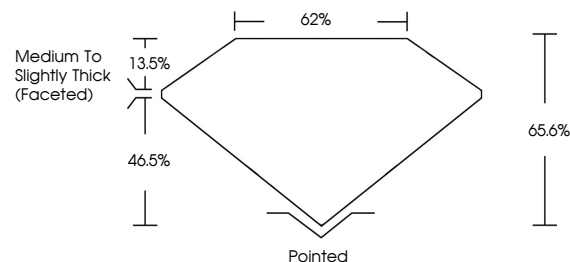
June 6, 2025
IGI Report Number **LG712590952**
Description **LABORATORY GROWN DIAMOND**
Shape and Cutting Style **HALF MOON BRILLIANT**
Measurements **9.45 X 6.17 X 4.05 MM**

GRADING RESULTS
Carat Weight **1.58 CARAT**
Color Grade **E**
Clarity Grade **VVS 2**

ADDITIONAL GRADING INFORMATION
Polish **EXCELLENT**
Symmetry **EXCELLENT**
Fluorescence **NONE**
Inscription(s) **(IGI) LG712590952**

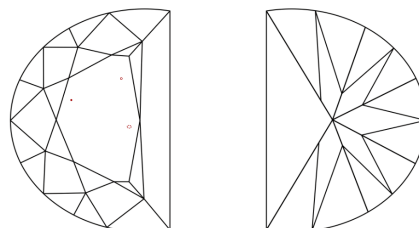
Comments: This Laboratory Grown Diamond was created by Chemical Vapor Deposition (CVD) growth process. Type IIa

PROPORTIONS



Sample Image Used

CLARITY CHARACTERISTICS



KEY TO SYMBOLS

Red symbols indicate internal characteristics.
Green symbols indicate external characteristics.

COLOR

D E F G H I J Faint Very Light Light

CLARITY

IF	WS ¹⁻²	VS ¹⁻²	SI ¹⁻²	I ¹⁻³
Internally Flawless	Very Very Slightly Included	Very Slightly Included	Slightly Included	Included

