



ELECTRONIC COPY

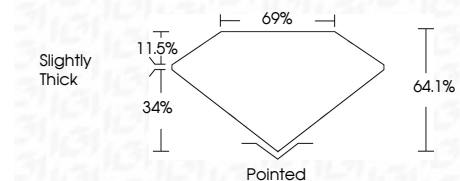
LG712588438
Report verification at igi.org



June 16, 2025
IGI Report Number **LG712588438**
Description **LABORATORY GROWN DIAMOND**
Shape and Cutting Style **KITE STEP CUT**
Measurements **8.09 X 6.49 X 4.16 MM**

GRADING RESULTS

Carat Weight **1.02 CARAT**
Color Grade **F**
Clarity Grade **VS 1**



ADDITIONAL GRADING INFORMATION

Polish **EXCELLENT**
Symmetry **EXCELLENT**
Fluorescence **NONE**
Inscription(s) **IGI LG712588438**
Comments: This Laboratory Grown Diamond was created by Chemical Vapor Deposition (CVD) growth process. Type IIa



June 16, 2025
IGI Report No LG712588438
KITE STEP CUT
8.09 X 6.49 X 4.16 MM
Carat Weight 1.02 CARAT
Color Grade F
Clarity Grade VS 1
Depth 64.1%
Table 34%
Girdle Slightly Thick
Culet Pointed
Polish EXCELLENT
Symmetry EXCELLENT
Fluorescence NONE
Inscription(s) IGI LG712588438
Comments: This Laboratory Grown Diamond was created by Chemical Vapor Deposition (CVD) growth process. Type IIa

LABORATORY GROWN DIAMOND REPORT

June 16, 2025
IGI Report Number **LG712588438**
Description **LABORATORY GROWN DIAMOND**
Shape and Cutting Style **KITE STEP CUT**
Measurements **8.09 X 6.49 X 4.16 MM**

GRADING RESULTS

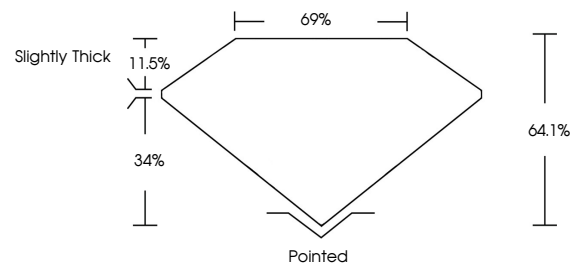
Carat Weight **1.02 CARAT**
Color Grade **F**
Clarity Grade **VS 1**

ADDITIONAL GRADING INFORMATION

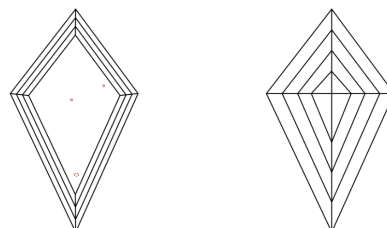
Polish **EXCELLENT**
Symmetry **EXCELLENT**
Fluorescence **NONE**
Inscription(s) **IGI LG712588438**

Comments: This Laboratory Grown Diamond was created by Chemical Vapor Deposition (CVD) growth process. Type IIa

PROPORTIONS

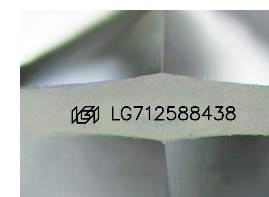


CLARITY CHARACTERISTICS



KEY TO SYMBOLS

Red symbols indicate internal characteristics.
Green symbols indicate external characteristics.



Sample Image Used

COLOR

D E F G H I J Faint Very Light Light

CLARITY

IF	VS ¹⁻²	VS ¹⁻²	SI ¹⁻²	I ¹⁻³
Internally Flawless	Very Very Slightly Included	Very Slightly Included	Slightly Included	Included

