



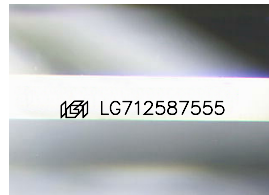
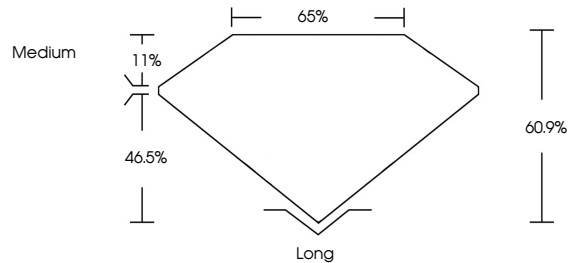
**INTERNATIONAL
GEMOLOGICAL
INSTITUTE**

ELECTRONIC COPY

LABORATORY GROWN DIAMOND REPORT

LG712587555
Report verification at igi.org

PROPORTIONS



Sample Image Used

COLOR

D E F G H I J Faint Very Light Light

CLARITY

IF	WVS ¹⁻²	VS ¹⁻²	SI ¹⁻²	I ¹⁻³
Internally Flawless	Very Very Slightly Included	Very Slightly Included	Slightly Included	Included

LABORATORY GROWN DIAMOND REPORT



June 5, 2025

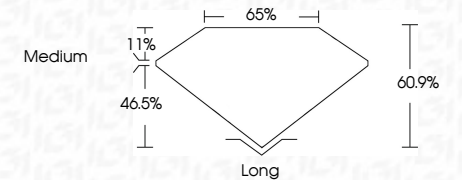
IGI Report Number **LG712587555**Description **LABORATORY GROWN DIAMOND**Shape and Cutting Style **HEXAGONAL MODIFIED STEP CUT**

Measurements **13.24 X 7.65 X 4.66 MM**

GRADING RESULTS

Carat Weight **3.35 CARATS**

Color Grade **E**

Clarity Grade VVS 2

ADDITIONAL GRADING INFORMATION

Polish **EXCELLENT**Symmetry **EXCELLENT**Fluorescence **NONE**Inscription(s) LG712587555

Comments: This Laboratory Grown Diamond was created by Chemical Vapor Deposition (CVD) growth process.
Type IIa



IGI



© IGI 2020, International Gemological Institute

FD - 10 20

www.igi.org

THIS DOCUMENT WAS PRODUCED WITH THE FOLLOWING SECURITY MEASURES: SPECIAL DOCUMENT PAPER, INK SCREENS, WATERMARK, BACKGROUND DESIGNS, HOLOGRAM AND OTHER SECURITY FEATURES NOT LISTED AND DO EXCEED DOCUMENT SECURITY INDUSTRY GUIDELINES.

June 5, 2025	GI Report No 1671287555	3.35 CARATS	13.24 X 7.65 X 4.65 MM
HEXAGONAL MODIFIED STEP CUT		E	
		VVS 2	
		60.9%	
		65%	
		Medium	
		Long	
		EXCELLENT	
		EXCELLENT	
		NONE	
		1671287555	
<p>Comments:</p> <p>This Laboratory Grown Diamond was created by Chemical Vapor Deposition (CVD) growth process.</p> <p>Type IIA</p>			