

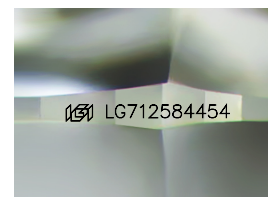
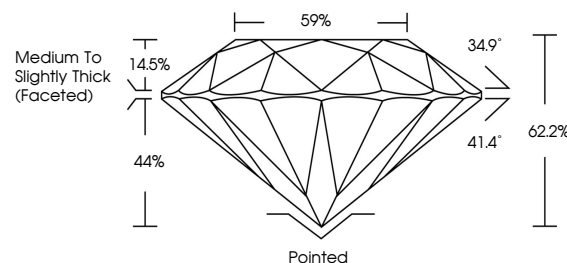


**ELECTRONIC COPY**

## LABORATORY GROWN DIAMOND REPORT

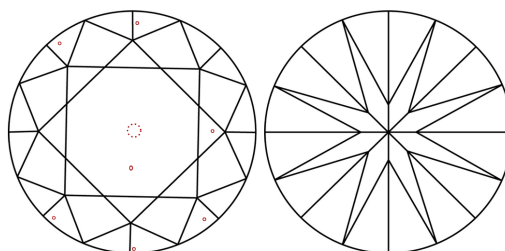
LG712584454  
Report verification at [iqi.org](https://iqi.org)

## PROPORTIONS



Sample Image Used

## CLARITY CHARACTERISTICS



## KEY TO SYMBOLS

Red symbols indicate internal characteristics.  
Green symbols indicate external characteristics.

## COLOR

D E F G H I J Faint Very Light Light

## CLARITY

IF WS<sup>1-2</sup> VS<sup>1-2</sup> SI<sup>1-2</sup> |<sup>1-3</sup>

Internally Flawless	Very Very Slightly Included	Very Slightly Included	Slightly Included	Included
------------------------	--------------------------------	---------------------------	----------------------	----------



June 3, 2025

IGI Report Number **LG712584454**Description **LABORATORY GROWN DIAMOND**Shape and Cutting Style **ROUND BRILLIANT**

Measurements	8.06 - 8.12 X 5.03 MM
--------------	-----------------------

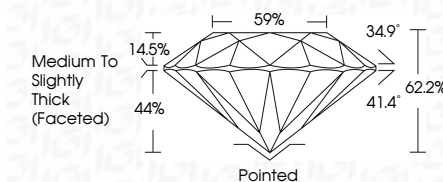
## GRADING RESULTS

Carat Weight **2.04 CARATS**

Color Grade	D
-------------	---

Clarity Grade VS 2

Cut Grade **IDEAL**



### ADDITIONAL GRADING INFORMATION

Polish **EXCELLENT**Symmetry **EXCELLENT**Fluorescence **NONE**Inscription(s)  LG712584454

Comments: This Laboratory Grown Diamond was created by Chemical Vapor Deposition (CVD) growth process.  
Type IIa



© IGI 2020, International Gemological Institute

FD - 10 20

**www.igi.org**



THIS DOCUMENT WAS PRODUCED WITH THE FOLLOWING SECURITY MEASURES: SPECIAL DOCUMENT PAPER, INK SCREENS, WATERMARK, BACKGROUND DESIGNS, HOLOGRAM AND OTHER SECURITY FEATURES NOT LISTED AND DO EXCEED DOCUMENT SECURITY INDUSTRY GUIDELINES

June 3, 2025  
GI Report No LG712584454  
ROUND BRILLIANT

8.06 - 8.12 X 5.03 MM	204 CARATS	D	VS 2	59%	Medium to Slightly Thick (Faceted)	Pointed
Carat Weight	Clarity Grade	Color Grade	Cut Grade	Depth	Table	Polish
Color	Clarity	Color	Cut	Depth	Table	Symmetry
Color	Clarity	Color	Cut	Depth	Table	Fluorescence

**Comments:**  
This Laboratory Grown Diamond was  
created by Chemical Vapor Deposition  
(CVD) growth process.