



ELECTRONIC COPY

LABORATORY GROWN DIAMOND REPORT

June 4, 2025	
IGI Report Number	LG712581779
Description	LABORATORY GROWN DIAMOND
Shape and Cutting Style	ROUND BRILLIANT
Measurements	7.41 - 7.43 X 4.60 MM

GRADING RESULTS

Carat Weight	1.58 CARAT
Color Grade	E
Clarity Grade	VS 1
Cut Grade	EXCELLENT

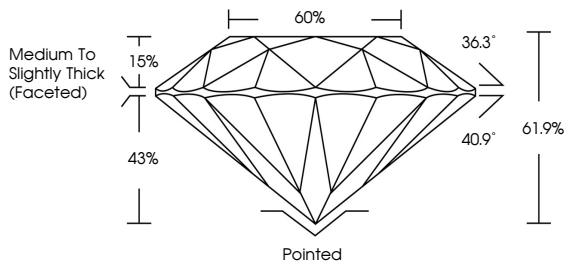
ADDITIONAL GRADING INFORMATION

Polish	EXCELLENT
Symmetry	EXCELLENT
Fluorescence	NONE
Inscription(s)	 LG712581779

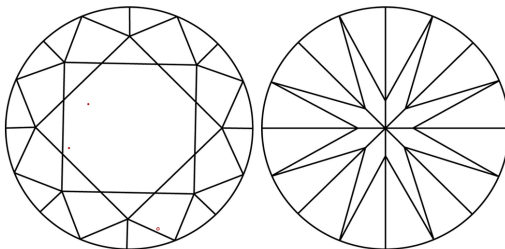
Comments: This Laboratory Grown Diamond was created by Chemical Vapor Deposition (CVD) growth process.
Type IIa

LG712581779
Report verification at igi.org

PROPORTIONS

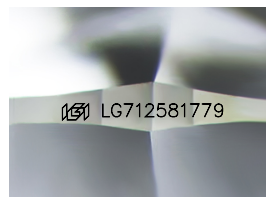


CLARITY CHARACTERISTICS



KEY TO SYMBOLS

Red symbols indicate internal characteristics.
Green symbols indicate external characteristics.



Sample Image Used

COLOR

D E F G H I J Faint Very Light Light

CLARITY

IF WS¹⁻² VS¹⁻² SI¹⁻² |¹⁻³

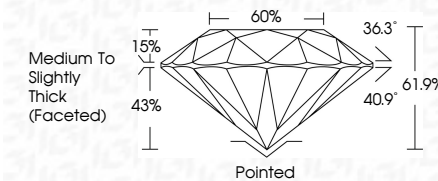
Internally Flawless	Very Very Slightly Included	Very Slightly Included	Slightly Included	Included
------------------------	--------------------------------	---------------------------	----------------------	----------



June 4, 2025	
IGI Report Number	LG712581779
Description	LABORATORY GROWN DIAMOND
Shape and Cutting Style	ROUND BRILLIANT
Measurements	7.41 - 7.43 X 4.60 MM

GRADING RESULTS

Carat Weight	1.58 CARAT
Color Grade	E
Clarity Grade	VS 1
Cut Grade	EXCELLENT



ADDITIONAL GRADING INFORMATION

Polish	EXCELLENT
Symmetry	EXCELLENT
Fluorescence	NONE
Inscription(s)	 LG712581779
Comments: This Laboratory Grown Diamond was created by Chemical Vapor Deposition (CVD) growth process.	
Type IIA	



© IGI 2020, International Gemological Institute

FD - 10 20

www.igi.org



June 4, 2025
IGI Report No LG712581779
ROUND BRILLIANT

NON-IONIC REAGENT	Carat Weight	1.68 CARAT
Color Grade	E	
Clarity Grade	VSI 1	
Cut Grade	EXCELLENT	
Depth	61.9%	
Table	60%	
Girdle	Medium To Slightly Thick (faceted)	
Culet	Pointed	
Polish	EXCELLENT	
Symmetry	EXCELLENT	
Fluorescence	NONE	
Lot Number	4061 CST1063770	

Comments:
This Laboratory Grown Diamond was created by Chemical Vapor Deposition (CVD) growth process.