



**INTERNATIONAL
GEMOLOGICAL
INSTITUTE**

ELECTRONIC COPY

LABORATORY GROWN DIAMOND REPORT

May 31, 2025
 IGI Report Number **LG712579508**
 Description **LABORATORY GROWN DIAMOND**
 Shape and Cutting Style **EMERALD CUT**
 Measurements **5.00 X 3.56 X 2.40 MM**

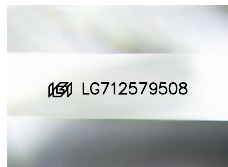
GRADING RESULTS

Carat Weight **0.41 CARAT**
 Color Grade **E**
 Clarity Grade **VS 1**

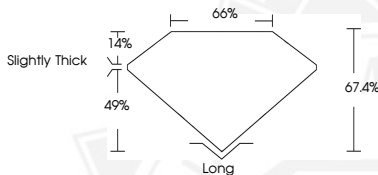
ADDITIONAL GRADING INFORMATION

Polish **EXCELLENT**
 Symmetry **VERY GOOD**
 Fluorescence **NONE**
 Inscription(s) **IGI LG712579508**

Comments: This Laboratory Grown Diamond was created by
 Chemical Vapor Deposition (CVD) growth process.
 Type IIa



Sample Image Used



May 31, 2025
 IGI Report Number **LG712579508**
EMERALD CUT
LABORATORY GROWN DIAMOND
5.00 X 3.56 X 2.40 MM
 Carat Weight **0.41 CARAT**
 Color Grade **E**
 Clarity Grade **VS 1**
 Polish **EXCELLENT**
 Symmetry **VERY GOOD**
 Fluorescence **NONE**
 Inscription(s) **IGI LG712579508**

Comments: This Laboratory Grown Diamond was created by
 Chemical Vapor Deposition (CVD) growth process. Type IIa



May 31, 2025
 IGI Report Number **LG712579508**
EMERALD CUT
LABORATORY GROWN DIAMOND
5.00 X 3.56 X 2.40 MM
 Carat Weight **0.41 CARAT**
 Color Grade **E**
 Clarity Grade **VS 1**
 Polish **EXCELLENT**
 Symmetry **VERY GOOD**
 Fluorescence **NONE**
 Inscription(s) **IGI LG712579508**

Comments: This Laboratory Grown Diamond was created by
 Chemical Vapor Deposition (CVD) growth process. Type IIa



THIS DOCUMENT WAS PRODUCED WITH THE FOLLOWING SECURITY MEASURES: SPECIAL DOCUMENT PAPER, INK SCREENS, WATERMARK, BACKGROUND DESIGN, HOLOGRAM AND OTHER SECURITY FEATURES NOT LISTED AND DO EXCEED DOCUMENT SECURITY INDUSTRY GUIDELINES.

For terms & conditions and to verify this report, please visit www.igi.org