



ELECTRONIC COPY

LG712576725 Report verification at igi.org



June 9, 2025 IGI Report Number LG712576725 Description LABORATORY GROWN DIAMOND Shape and Cutting Style ROUND ROSE CUT Measurements 9.13 - 9.29 X 1.79 MM GRADING RESULTS Carat Weight 1.64 CARAT Color Grade FANCY INTENSE GREEN Clarity Grade VS 1

June 9, 2025 IGI Report Number LG712576725 Description LABORATORY GROWN DIAMOND Shape and Cutting Style ROUND ROSE CUT Measurements 9.13 - 9.29 X 1.79 MM

GRADING RESULTS

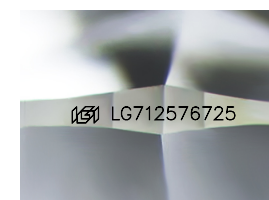
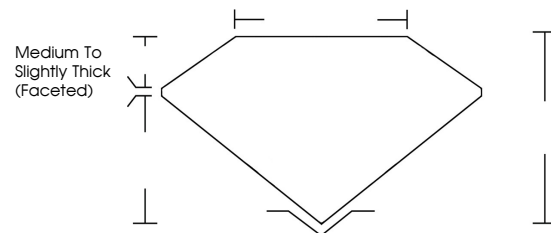
Carat Weight 1.64 CARAT Color Grade FANCY INTENSE GREEN Clarity Grade VS 1

ADDITIONAL GRADING INFORMATION

Polish EXCELLENT Symmetry EXCELLENT Fluorescence NONE Inscription(s) IGI LG712576725

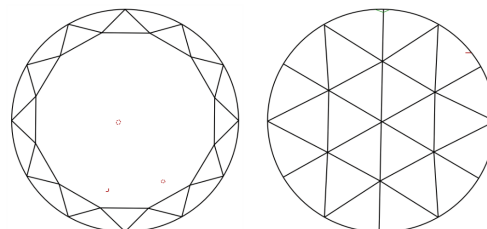
Comments: This Laboratory Grown Diamond was created by Chemical Vapor Deposition (CVD) growth process. Indications of post-growth treatment.

PROPORTIONS



Sample Image Used

CLARITY CHARACTERISTICS



KEY TO SYMBOLS

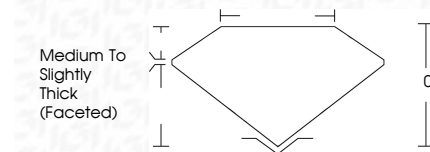
Red symbols indicate internal characteristics. Green symbols indicate external characteristics.

COLOR

D E F G H I J Faint Very Light Light

CLARITY

IF VS 1-2 VS 1-2 SI 1-2 I 1-3 Internally Flawless Very Very Slightly Included Very Slightly Included Slightly Included Included



ADDITIONAL GRADING INFORMATION

Polish EXCELLENT Symmetry EXCELLENT Fluorescence NONE Inscription(s) IGI LG712576725 Comments: This Laboratory Grown Diamond was created by Chemical Vapor Deposition (CVD) growth process. Indications of post-growth treatment.



June 9, 2025 IGI Report No LG712576725 ROUND ROSE CUT 9.13 - 9.29 X 1.79 MM 1.64 CARAT FANCY INTENSE GREEN VS 1 Medium to Slightly Thick (Faceted) EXCELLENT EXCELLENT NONE IGI LG712576725 Comments: This Laboratory Grown Diamond was created by Chemical Vapor Deposition (CVD) growth process. Indications of post-growth treatment.