

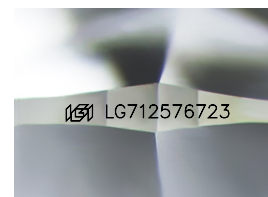
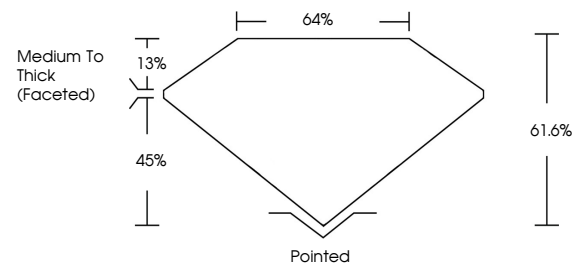


**ELECTRONIC COPY**

## LABORATORY GROWN DIAMOND REPORT

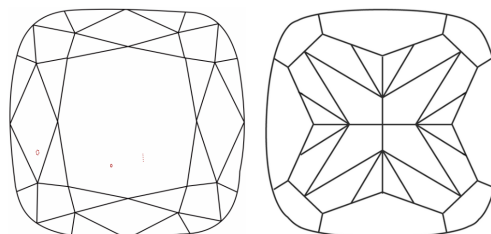
LG712576723  
Report verification at [igi.org](https://igi.org)

## PROPORTIONS



Sample Image Used

## CLARITY CHARACTERISTICS



## KEY TO SYMBOLS

Red symbols indicate internal characteristics.  
Green symbols indicate external characteristics.

## COLOR

D E F G H I J Faint Very Light Light

## CLARITY

IF WS<sup>1-2</sup> VS<sup>1-2</sup> SI<sup>1-2</sup> |<sup>1-3</sup>

Internally Flawless	Very Very Slightly Included	Very Slightly Included	Slightly Included	Included
------------------------	--------------------------------	---------------------------	----------------------	----------



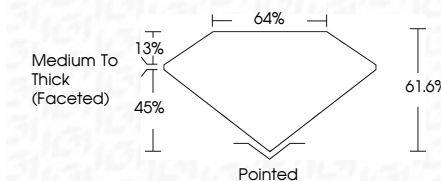
June 5, 2025

IGI Report Number **LG712576723**Description **LABORATORY GROWN DIAMOND**Shape and Cutting Style **SQUARE CUSHION MODIFIED  
BRILLIANT**

Measurements 7.37 X 7.03 X 4.33 MM

## GRADING RESULTS

Carat Weight **2.02 CARATS**

Color Grade **FANCY BROWN**Clarity Grade VS 2

### ADDITIONAL GRADING INFORMATION

Polish VERY GOOD

Symmetry **VERY GOOD**

Fluorescence SLIGHT

Inscription(s)  LG712576723

Comments: This Laboratory Grown Diamond was created by Chemical Vapor Deposition (CVD) growth process.



© IGI 2020, International Gemological Institute

FD - 10 20

**www.igi.org**

THIS DOCUMENT WAS PRODUCED WITH THE FOLLOWING SECURITY MEASURES: SPECIAL DOCUMENT PAPER, INK SCREENS, WATERMARK BACKGROUND DESIGNS, HOLOGRAM AND OTHER SECURITY FEATURES NOT LISTED AND DO EXCEED DOCUMENT SECURITY INDUSTRY GUIDELINES

June 5, 2025	G Report No. LG71257/223	SQUARE CUSHION ORIENTED BRILLIANT	
		2.02 CARATS	
		FANCY BROWN	
		VVS 2	61.6%
			64%
		Medium to Thick (Faceted)	
		Pointed	
		VERY GOOD	
		VERY GOOD	
		SIGHT	
		1891 LG71257/223	
<p>Comments:</p> <p>This Laboratory Grown Diamond was          created using the Chemical Vapor Deposition          (CVD) growth process.</p>			