

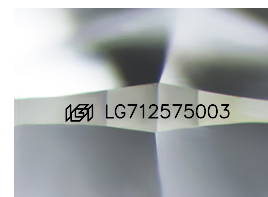
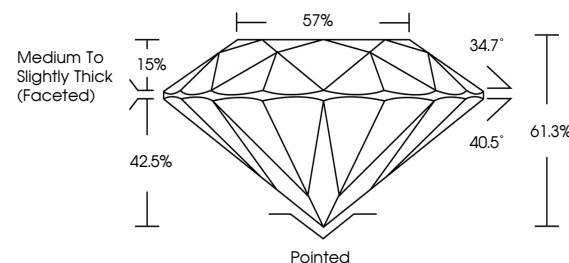


ELECTRONIC COPY

LABORATORY GROWN DIAMOND REPORT

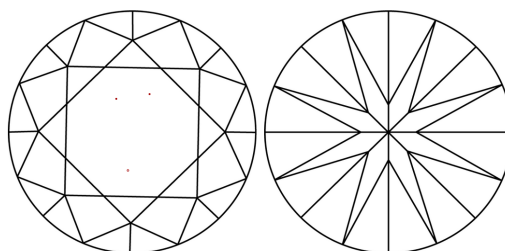
LG712575003
Report verification at igi.org

PROPORTIONS



Sample Image Used

CLARITY CHARACTERISTICS



KEY TO SYMBOLS

Red symbols indicate internal characteristics.
Green symbols indicate external characteristics.

COLOR

D E F G H I J Faint Very Light Light

CLARITY

IF WS¹⁻² VS¹⁻² SI¹⁻² |¹⁻³

Internally Flawless	Very Very Slightly Included	Very Slightly Included	Slightly Included	Included
------------------------	--------------------------------	---------------------------	----------------------	----------



June 18, 2025

IGI Report Number **LG712575003**Description **LABORATORY GROWN DIAMOND**Shape and Cutting Style **ROUND BRILLIANT**

Measurements 9.26 - 9.29 X 5.68 MM

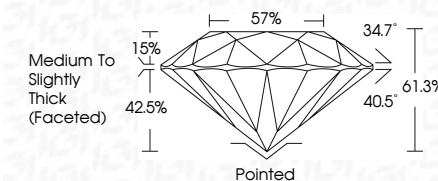
GRADING RESULTS

Carat Weight 3.03 CARATS

Color Grade G

Clarity Grade WS 2

Cut Grade **IDEAL**



ADDITIONAL GRADING INFORMATION

Polish EXCELLENT

Symmetry **EXCELLENT**Fluorescence **NONE**Inscription(s) LG712575003

Comments: This Laboratory Grown Diamond was created by Chemical Vapor Deposition (CVD) growth process.
Type IIa



© IGI 2020, International Gemological Institute

FD - 10 20

www.igi.org



THIS DOCUMENT WAS PRODUCED WITH THE FOLLOWING SECURITY MEASURES: SPECIAL DOCUMENT PAPER, INK SCREENS, WATERMARK, BACKGROUND DESIGNS, HOLOGRAM AND OTHER SECURITY FEATURES NOT LISTED AND DO EXCEED DOCUMENT SECURITY INDUSTRY GUIDELINE

June 18, 2025
GI Report No LG712575003
ROUND BRILLIANT

2.26 - 9.29 X 5.68 MM	Coral Weight	3.03 CARATS
	Color Grade	G
	Clarity Grade	VVS 2
	Cut Grade	IDEAL
	Depth	61.9%
	Table	57%
	Grade	Medium to Slightly Thick (Faceted)
	Culet	Pointed
	Polish	EXCELLENT
	Symmetry	EXCELLENT
	Fluorescence	NONE
	Reference(s)	see 1271957509

Comments:
This Laboratory Grown Diamond was
created by Chemical Vapor Deposition
(CVD) growth process.