



ELECTRONIC COPY

LG712572007 Report verification at igi.org



June 3, 2025 IGI Report Number LG712572007 Description LABORATORY GROWN DIAMOND Shape and Cutting Style CUT CORNERED RECTANGULAR MODIFIED BRILLIANT Measurements 18.72 X 12.58 X 7.51 MM GRADING RESULTS Carat Weight 15.23 CARATS Color Grade F Clarity Grade VVS 2

June 3, 2025 IGI Report Number LG712572007 Description LABORATORY GROWN DIAMOND Shape and Cutting Style CUT CORNERED RECTANGULAR MODIFIED BRILLIANT Measurements 18.72 X 12.58 X 7.51 MM

GRADING RESULTS

Carat Weight 15.23 CARATS Color Grade F Clarity Grade VVS 2

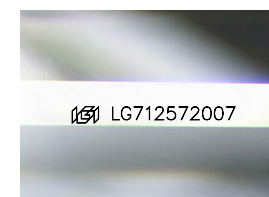
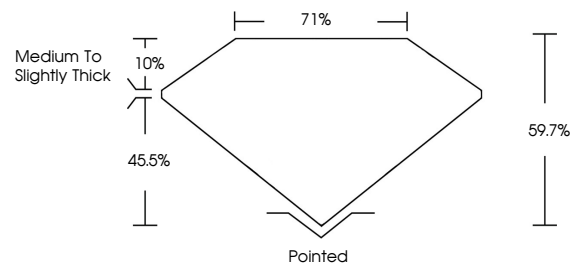
ADDITIONAL GRADING INFORMATION

Polish EXCELLENT Symmetry EXCELLENT Fluorescence NONE

Inscription(s) LG712572007

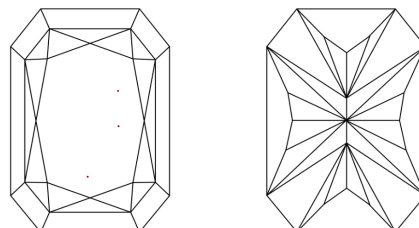
Comments: This Laboratory Grown Diamond was created by Chemical Vapor Deposition (CVD) growth process. Type IIa

PROPORTIONS



Sample Image Used

CLARITY CHARACTERISTICS



KEY TO SYMBOLS

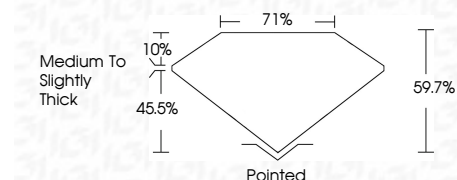
Red symbols indicate internal characteristics. Green symbols indicate external characteristics.

COLOR

D E F G H I J Faint Very Light Light

CLARITY

IF WS 1-2 VS 1-2 SI 1-2 I 1-3 Internally Flawless Very Very Slightly Included Very Slightly Included Slightly Included Included



ADDITIONAL GRADING INFORMATION

Polish EXCELLENT Symmetry EXCELLENT Fluorescence NONE Inscription(s) LG712572007 Comments: This Laboratory Grown Diamond was created by Chemical Vapor Deposition (CVD) growth process. Type IIa



June 3, 2025 IGI Report No LG712572007 CUT CORNERED RECT. MODIFIED BRILLIANT 18.72 X 12.58 X 7.51 MM 15.23 CARATS F VVS 2 59.7% 71% Medium to Slightly Thick Pointed EXCELLENT EXCELLENT NONE LG712572007 Comments: This Laboratory Grown Diamond was created by Chemical Vapor Deposition (CVD) growth process. Type IIa