

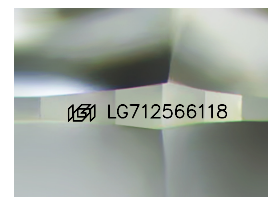
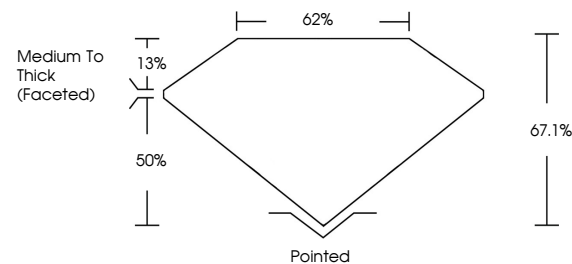


ELECTRONIC COPY

LABORATORY GROWN DIAMOND REPORT

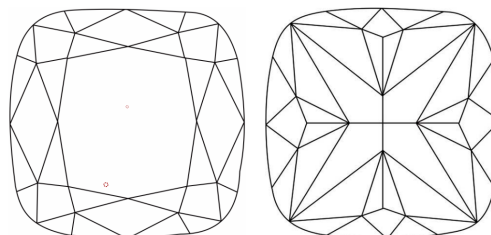
LG712566118
Report verification at igi.org

PROPORTIONS



Sample Image Used

CLARITY CHARACTERISTICS



KEY TO SYMBOLS

Red symbols indicate internal characteristics.
Green symbols indicate external characteristics.

COLOR

D E F G H I J Faint Very Light Light

CLARITY

IF	VS ¹⁻²	VS ¹⁻²	SI ¹⁻²	I ¹⁻³
Internally Flawless	Very Very Slightly Included	Very Slightly Included	Slightly Included	Included

LABORATORY GROWN DIAMOND REPORT



June 26, 2025

IGI Report Number **LG712566118**Description **LABORATORY GROWN DIAMOND**

Shape and Cutting Style **SQUARE CUSHION MODIFIED
BRILLIANT**

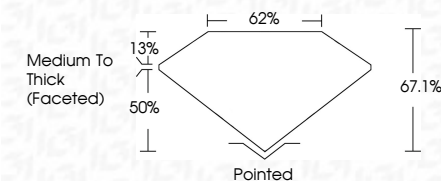
Measurements **8.29 X 8.27 X 5.55 MM**

GRADING RESULTS

Carat Weight **3.01 CARATS**

Color Grade D

Clarity Grade **VVS 2**



ADDITIONAL GRADING INFORMATION

Polish **EXCELLENT**Symmetry **EXCELLENT**

Fluorescence NONI

Inscription(s) LG712566118

Comments: This Laboratory Grown Diamond was created by Chemical Vapor Deposition (CVD) growth process.
Type IIa



© IGI 2020, International Gemological Institute

FD - 10 20

www.igi.org

THIS DOCUMENT WAS PRODUCED WITH THE FOLLOWING SECURITY MEASURES: SPECIAL DOCUMENT PAPER, INK SCREENS, WATERMARK, BACKGROUND DESIGNS, HOLOGRAM AND OTHER SECURITY FEATURES NOT LISTED AND DO EXCEED DOCUMENT SECURITY INDUSTRY GUIDELINE

June 24, 2026	Report No. LG7/2566118	SQUARE CUSHION MODIFIED BRILLIANT
0.29 X 0.27 X 5.56 MM	3.01 CARATS	
Color Weight	D	
Color Grade	VVS 2	
Clarity Grade	67.1 %	
Fluorescence	62%	
Depth	Medium to Thick	
Table	(faceted)	
Grain		
Color	Pointed	
Polish	EXCELLENT	
Symmetry	EXCELLENT	
Fluorescence	NONE	
Inscriptions	681 LG7/2566118	
Comments:		
	Created by ChemVapor.us	
	Created by Growth Vapor Deposition	
	CVD growth process.	
	Type IIG	