



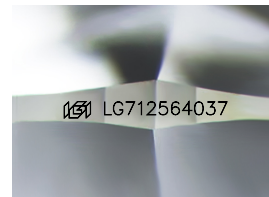
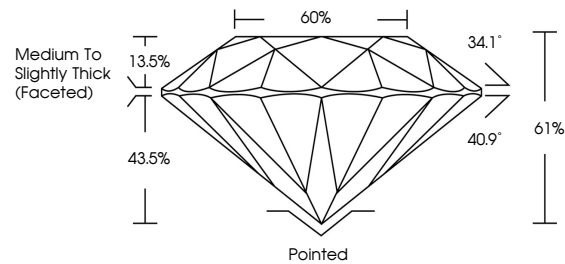
**INTERNATIONAL  
GEMOLOGICAL  
INSTITUTE**

**ELECTRONIC COPY**

## LABORATORY GROWN DIAMOND REPORT

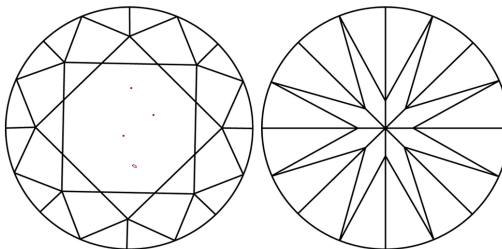
LG712564037  
Report verification at [igi.org](https://igi.org)

## PROPORTIONS



Sample Image Used

## CLARITY CHARACTERISTICS



## KEY TO SYMBOLS

Red symbols indicate internal characteristics.  
Green symbols indicate external characteristics.

**COLOR**

D E F G H I J Faint Very Light Light

## CLARITY

IF                      WS<sup>1-2</sup>                      VS<sup>1-2</sup>                      SI<sup>1-2</sup>                      I<sup>1-3</sup>

|                        |                                |                           |                      |          |
|------------------------|--------------------------------|---------------------------|----------------------|----------|
| Internally<br>Flawless | Very Very<br>Slightly Included | Very<br>Slightly Included | Slightly<br>Included | Included |
|------------------------|--------------------------------|---------------------------|----------------------|----------|



© IGI 2020, International Gemological Institute

FD - 10 20

**www.igi.org**

THIS DOCUMENT WAS PRODUCED WITH THE FOLLOWING SECURITY MEASURES: SPECIAL DOCUMENT PAPER, INK SCREENS, WATERMARK, BACKGROUND DESIGNS, HOLOGRAM AND OTHER SECURITY FEATURES NOT LISTED AND DO EXCEED DOCUMENT SECURITY INDUSTRY GUIDELINES

## LABORATORY GROWN DIAMOND REPORT



May 31, 2025

IGI Report Number **LG712564037**Description **LABORATORY GROWN DIAMOND**Shape and Cutting Style **ROUND BRILLIANT**

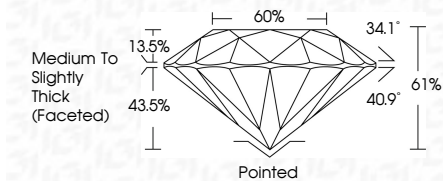
Measurements 8.16 - 8.20 X 4.99 MM

## GRADING RESULTS

Carat Weight **2.05 CARATS**

Color Grade E

Clarity Grade VS 1

Cut Grade **IDEAL**

### ADDITIONAL GRADING INFORMATION

Polish **EXCELLENT**Symmetry **EXCELLENT**Fluorescence **NONE**Inscription(s)  LG712564037

Comments: This Laboratory Grown Diamond was created by Chemical Vapor Deposition (CVD) growth process.  
Type IIa



IG

|   |                                    |                 |
|---|------------------------------------|-----------------|
| May 31, 2026  | 2.06 CARATS                        |                 |
| IGI Report No. G5712564037  | E                                  |                 |
| ROUND BRILLIANT   | VS 1                               |                 |
|   | IDEAL                              |                 |
|   | 61%                                |                 |
|   | 60%                                |                 |
|   | Medium to Slightly Thick (Faceted) |                 |
|   |                                    | Polished        |
|   |                                    | EXCELLENT       |
|   |                                    | EXCELLENT       |
|   |                                    | NONE            |
|   |                                    | IGI G5712564037 |
| <b>Comments:</b><br>The Laboratory Grown Diamond was<br>created by Chemical Vapor Deposition<br>in a high-pressure, high-temperature<br>growth process.<br>Type IIa |                                    |                 |