



**ELECTRONIC COPY**

## LABORATORY GROWN DIAMOND REPORT

|                         |                          |
|-------------------------|--------------------------|
| May 30, 2025            |                          |
| IGI Report Number       | LG712564019              |
| Description             | LABORATORY GROWN DIAMOND |
| Shape and Cutting Style | ROUND BRILLIANT          |
| Measurements            | 7.28 - 7.33 X 4.50 MM    |

## GRADING RESULTS

|               |            |
|---------------|------------|
| Carat Weight  | 1.49 CARAT |
| Color Grade   | D          |
| Clarity Grade | VVS 2      |
| Cut Grade     | EXCELLENT  |

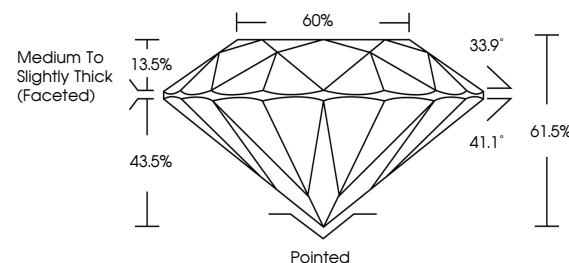
### ADDITIONAL GRADING INFORMATION

|                |                |
|----------------|----------------|
| Polish         | EXCELLENT      |
| Symmetry       | EXCELLENT      |
| Fluorescence   | NONE           |
| Inscription(s) | 15 LG712564019 |

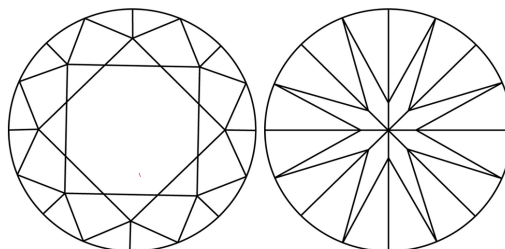
Comments: This Laboratory Grown Diamond was created by Chemical Vapor Deposition (CVD) growth process.  
Type IIa

LG712564019  
Report verification at [igi.org](https://igi.org)

## PROPORTIONS

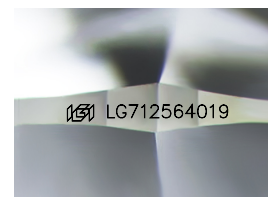


## CLARITY CHARACTERISTICS



## KEY TO SYMBOLS

Red symbols indicate internal characteristics.  
Green symbols indicate external characteristics.



Sample Image Used

## COLOR

D E F G H I J Faint Very Light Light

## CLARITY

IF WS<sup>1-2</sup> VS<sup>1-2</sup> SI<sup>1-2</sup> |<sup>1-3</sup>

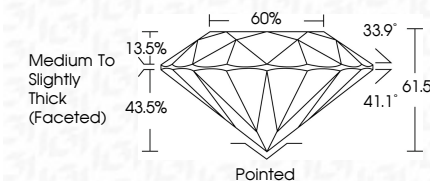
| Internally<br>Flawless | Very Very<br>Slightly Included | Very<br>Slightly Included | Slightly<br>Included | Included |
|------------------------|--------------------------------|---------------------------|----------------------|----------|
|------------------------|--------------------------------|---------------------------|----------------------|----------|



|                         |                          |
|-------------------------|--------------------------|
| May 30, 2025            |                          |
| IGI Report Number       | LG712564019              |
| Description             | LABORATORY GROWN DIAMOND |
| Shape and Cutting Style | ROUND BRILLIANT          |
| Measurements            | 7.28 - 7.33 X 4.50 MM    |

## GRADING RESULTS

|               |            |
|---------------|------------|
| Carat Weight  | 1.49 CARAT |
| Color Grade   | D          |
| Clarity Grade | VVS 2      |
| Cut Grade     | EXCELLENT  |



### ADDITIONAL GRADING INFORMATION

|   |  |
|---|--|
| Polish  | EXCELLENT  |
| Symmetry  | EXCELLENT  |
| Fluorescence  | NONE   |
| Inscription(s)  |  LG712564019 |
| <p>Comments: This Laboratory Grown Diamond was created by Chemical Vapor Deposition (CVD) growth process.</p> <p>Type IIa</p> |  |



© IGI 2020, International Gemological Institute

FD - 10 20



THIS DOCUMENT WAS PRODUCED WITH THE FOLLOWING SECURITY MEASURES: SPECIAL DOCUMENT PAPER, INK SCREENS, WATERMARK, BACKGROUND DESIGNS, HOLOGRAM AND OTHER SECURITY FEATURES NOT LISTED AND DO EXCEED DOCUMENT SECURITY INDUSTRY GUIDELINE

**www.igi.org**

|                           |  |                                    |
|---------------------------|--|------------------------------------|
| May 30, 2005              | Color Weight   | 1.40 CARAT                         |
| GI Report No. G1712564019 | Color Grade  | D                                  |
| ROUND BRILLIANT           | Clarity Grade  | VVS 2                              |
|                           | Cut Grade  | EXCELLENT                          |
|                           | Depth  | 61.5%                              |
|                           | Table  | 60%                                |
|                           | Girdle   | Medium to Slightly Thick (Faceted) |
|                           | Culet  | Pointed                            |
|                           | Polish   | EXCELLENT                          |
|                           | Symmetry   | EXCELLENT                          |
|                           | Fluorescence   | NONE                               |
|                           | Inscriptions(s)  | 691 G1712564019                    |
| Comments:                 | Crown Vapour used<br>created by Chemical Vapor deposition<br>CVD growth process.<br>type IIG |                                    |