

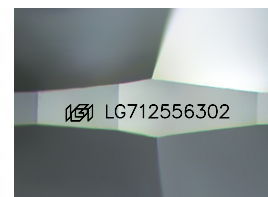
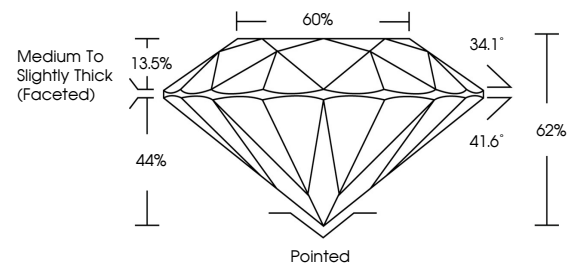


ELECTRONIC COPY

LABORATORY GROWN DIAMOND REPORT

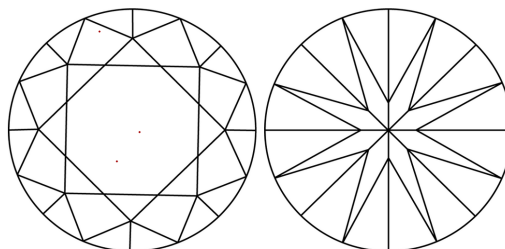
LG712556302
Report verification at igi.org

PROPORTIONS



Sample Image Used

CLARITY CHARACTERISTICS



KEY TO SYMBOLS

Red symbols indicate internal characteristics.
Green symbols indicate external characteristics.

COLOR

D E F G H I J Faint Very Light Light

CLARITY

IF WS¹⁻² VS¹⁻² SI¹⁻² |¹⁻³

Internally Flawless	Very Very Slightly Included	Very Slightly Included	Slightly Included	Included
------------------------	--------------------------------	---------------------------	----------------------	----------



May 30, 2025

IGI Report Number **LG712556302**Description **LABORATORY GROWN DIAMOND**Shape and Cutting Style **ROUND BRILLIANT**

Measurements 7.28 - 7.33 X 4.53 MM

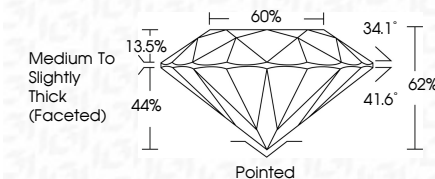
GRADING RESULTS

Carat Weight **1.50 CARAT**

Color Grade E

Clarity Grade VVS 2

Cut Grade **EXCELLENT**



ADDITIONAL GRADING INFORMATION

Polish **EXCELLENT**Symmetry **EXCELLENT**Fluorescence **NONE**Inscription(s)  LG712556302

Comments: This Laboratory Grown Diamond was created by Chemical Vapor Deposition (CVD) growth process.
Type IIa



© IGI 2020, International Gemological Institute

FD - 10 20

www.igi.org



THIS DOCUMENT WAS PRODUCED WITH THE FOLLOWING SECURITY MEASURES: SPECIAL DOCUMENT PAPER, INK SCREENS, WATERMARK, BACKGROUND DESIGNS, HOLOGRAM AND OTHER SECURITY FEATURES NOT LISTED AND DO EXCEED DOCUMENT SECURITY INDUSTRY GUIDELINE

May 30, 2026	GI Report No. G7/2556302	1.50 CARAT	WVS 2	EXCELLENT	60%	EXCELLENT	Portined	EXCELLENT	NONE	169 LG712556302	Comments: Grown Diamond was treated by Chemical Vapor Deposition (CVD) growth process. Type IIa
ROUND BRILLIANT	1.28 - 1.33 X 4.53 MM	Color Grade	Clarity Grade	Cut Grade	Depth	Table	Girdle	Symmetry	Fluorescence	Inscription(s)	
		Color Grade	Clarity Grade	Cut Grade	Depth	Table	Girdle	Symmetry	Fluorescence	Inscription(s)	