



ELECTRONIC COPY

LG712551704
Report verification at igi.org



May 29, 2025
IGI Report Number LG712551704
Description LABORATORY GROWN DIAMOND
Shape and Cutting Style ROUND BRILLIANT
Measurements 7.85 - 7.90 X 4.78 MM
GRADING RESULTS
Carat Weight 1.81 CARAT
Color Grade E
Clarity Grade INTERNALLY FLAWLESS
Cut Grade IDEAL

May 29, 2025
IGI Report Number LG712551704
Description LABORATORY GROWN DIAMOND
Shape and Cutting Style ROUND BRILLIANT
Measurements 7.85 - 7.90 X 4.78 MM

GRADING RESULTS

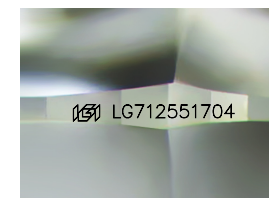
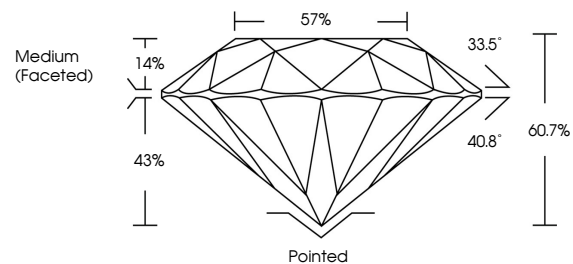
Carat Weight 1.81 CARAT
Color Grade E
Clarity Grade INTERNALLY FLAWLESS
Cut Grade IDEAL

ADDITIONAL GRADING INFORMATION

Polish EXCELLENT
Symmetry EXCELLENT
Fluorescence NONE
Inscription(s) LG712551704

Comments: HEARTS & ARROWS
As Grown - No indication of post-growth treatment.
This Laboratory Grown Diamond was created by High Pressure High Temperature (HPHT) growth process.
Type II

PROPORTIONS



Sample Image Used

CLARITY CHARACTERISTICS



KEY TO SYMBOLS

Red symbols indicate internal characteristics.
Green symbols indicate external characteristics.



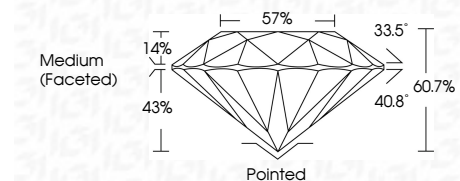
COLOR

D E F G H I J Faint Very Light Light

CLARITY

IF VS 1-2 VS 1-2 SI 1-2 I 1-3

Internally Flawless Very Very Slightly Included Very Slightly Included Slightly Included Included



ADDITIONAL GRADING INFORMATION

Polish EXCELLENT
Symmetry EXCELLENT
Fluorescence NONE
Inscription(s) LG712551704
Comments: HEARTS & ARROWS
As Grown - No indication of post-growth treatment.
This Laboratory Grown Diamond was created by High Pressure High Temperature (HPHT) growth process.
Type II



Table with 2 columns: Property and Value. Includes Carat Weight (1.81 CARAT), Color Grade (E), Clarity Grade (IF), Depth (60.7%), Table (57%), Grade (Medium (Faceted)), Polish (EXCELLENT), Symmetry (EXCELLENT), Fluorescence (NONE), and Inscription(s) (IGI LG712551704).