



**ELECTRONIC COPY**

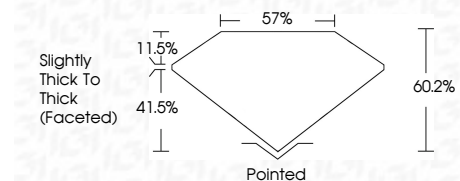
LG712549454  
Report verification at [igi.org](http://igi.org)



June 3, 2025  
IGI Report Number **LG712549454**  
Description **LABORATORY GROWN DIAMOND**  
Shape and Cutting Style **HEART MODIFIED BRILLIANT**  
Measurements **6.83 X 7.52 X 4.53 MM**

**GRADING RESULTS**

Carat Weight **1.64 CARAT**  
Color Grade **FANCY VIVID GREEN**  
Clarity Grade **VVS 1**



**ADDITIONAL GRADING INFORMATION**

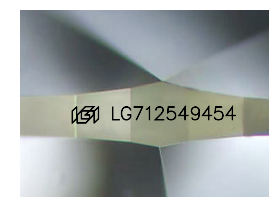
Polish **EXCELLENT**  
Symmetry **EXCELLENT**  
Fluorescence **NONE**  
Inscription(s) **(IGI) LG712549454**

Comments: This Laboratory Grown Diamond was created by High Pressure High Temperature (HPHT) growth process. Indications of post-growth treatment.



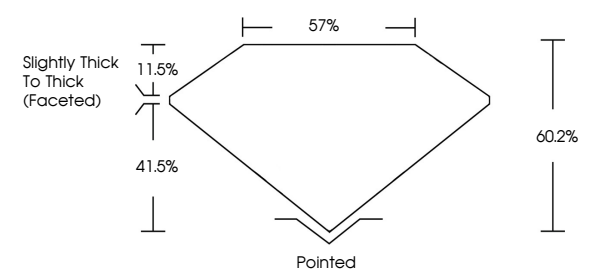
June 3, 2025  
IGI Report No **LG712549454**  
**HEART MODIFIED BRILLIANT**  
6.83 X 7.52 X 4.53 MM  
1.64 CARAT  
FANCY VIVID GREEN  
VVS 1  
60.2%  
57%  
Slightly Thick To Thick (Faceted)  
Pointed  
EXCELLENT  
EXCELLENT  
NONE  
(IGI) LG712549454

Comments: This Laboratory Grown Diamond was created by High Pressure High Temperature (HPHT) growth process. Indications of post-growth treatment.

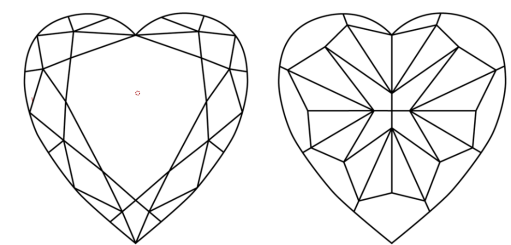


Sample Image Used

**PROPORTIONS**



**CLARITY CHARACTERISTICS**



**KEY TO SYMBOLS**

Red symbols indicate internal characteristics.  
Green symbols indicate external characteristics.

**COLOR**

D	E	F	G	H	I	J	Faint	Very Light	Light
---	---	---	---	---	---	---	-------	------------	-------

**CLARITY**

IF	VS <sup>1-2</sup>	VS <sup>1-2</sup>	SI <sup>1-2</sup>	I <sup>1-3</sup>
Internally Flawless	Very Very Slightly Included	Very Slightly Included	Slightly Included	Included

