

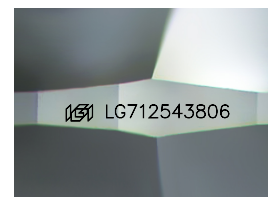
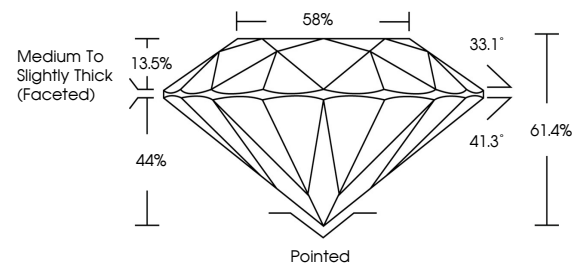


ELECTRONIC COPY

LABORATORY GROWN DIAMOND REPORT

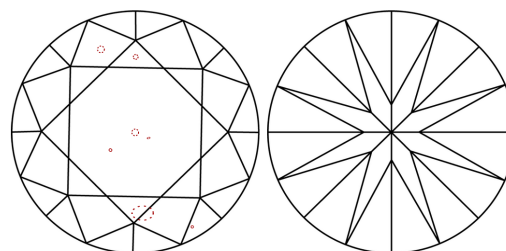
LG712543806
Report verification at igi.org

PROPORTIONS



Sample Image Used

CLARITY CHARACTERISTICS



KEY TO SYMBOLS

Red symbols indicate internal characteristics.
Green symbols indicate external characteristics.

COLOR

D E F G H I J Faint Very Light Light

CLARITY

IF WS¹⁻² VS¹⁻² SI¹⁻² |¹⁻³

Internally Flawless	Very Very Slightly Included	Very Slightly Included	Slightly Included	Included
------------------------	--------------------------------	---------------------------	----------------------	----------



May 29, 2025

IGI Report Number **LG712543806**Description **LABORATORY GROWN DIAMOND**Shape and Cutting Style **ROUND BRILLIANT**

Measurements 7.33 - 7.39 X 4.53 MM

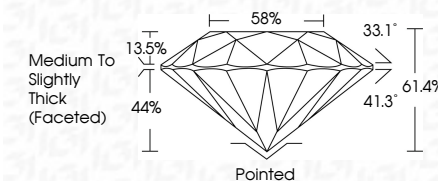
GRADING RESULTS

Carat Weight 1.50 CARAT

Color Grade D

Clarity Grade VS 2

Cut Grade **IDEAL**



ADDITIONAL GRADING INFORMATION

Polish **EXCELLENT**Symmetry **EXCELLENT**Fluorescence **NONE**Inscription(s) LG712543806

Comments: This Laboratory Grown Diamond was created by Chemical Vapor Deposition (CVD) growth process.
Type IIa



© IGI 2020, International Gemological Institute

FD - 10 20

www.igi.org



THIS DOCUMENT WAS PRODUCED WITH THE FOLLOWING SECURITY MEASURES: SPECIAL DOCUMENT PAPER, INK SCREENS, WATERMARK, BACKGROUND DESIGNS, HOLOGRAM AND OTHER SECURITY FEATURES NOT LISTED AND DO EXCEED DOCUMENT SECURITY INDUSTRY GUIDELINE

May 29, 2026	1.50 CARAT
GI Report No. G77/2543805	D
ROUND BRILLIANT	VS 2
33 - 7.39 X 4.83 MM	IDEAL
Carat Weight	61.4%
Color Grade	58%
Clarity Grade	Medium to Slightly Thick (Faced)
Cut Grade	Pointed
Depth	EXCELLENT
Table	EXCELLENT
Girdle	NONE
Culet	169 LG772543806
Polish	
Symmetry	
Fluorescence	
Inscriptions(s)	
Comments:	
	The Laboratory Crown Diamond was CVD Vapor Deposition growth process.
	Type Iia