

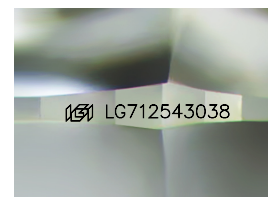
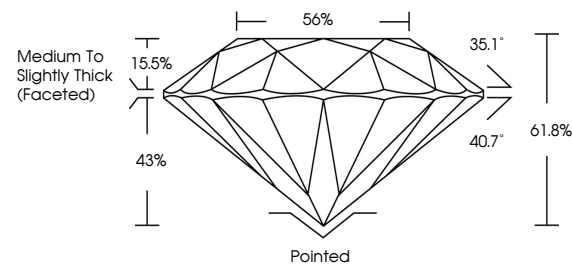


ELECTRONIC COPY

LABORATORY GROWN DIAMOND REPORT

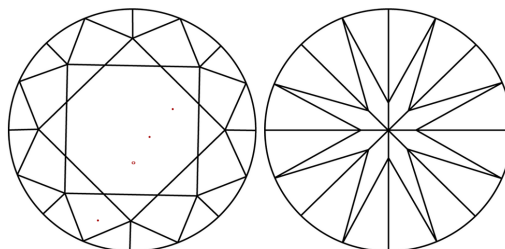
LG712543038
Report verification at igi.org

PROPORTIONS



Sample Image Used

CLARITY CHARACTERISTICS



KEY TO SYMBOLS

Red symbols indicate internal characteristics.
Green symbols indicate external characteristics.

COLOR

D E F G H I J Faint Very Light Light

CLARITY

IF WS¹⁻² VS¹⁻² SI¹⁻² |¹⁻³

Internally Flawless	Very Very Slightly Included	Very Slightly Included	Slightly Included	Included
------------------------	--------------------------------	---------------------------	----------------------	----------

LABORATORY GROWN DIAMOND REPORT



May 29, 2025

IGI Report Number **LG712543038**Description **LABORATORY GROWN DIAMOND**Shape and Cutting Style **ROUND BRILLIANT**

Measurements 7.35 - 7.38 X 4.55 MM

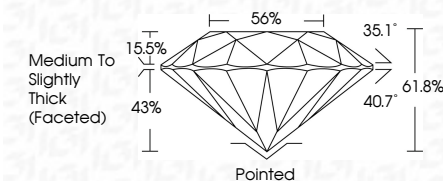
GRADING RESULTS

Carat Weight **1.52 CARAT**

Color Grade D

Clarity Grade VS 1

Cut Grade **IDEAL**



ADDITIONAL GRADING INFORMATION

Polish **EXCELLENT**Symmetry **EXCELLENT**Fluorescence **NONE**Inscription(s) LG712543038

Comments: This Laboratory Grown Diamond was created by Chemical Vapor Deposition (CVD) growth process.
Type IIa



© IGI 2020, International Gemological Institute

FD - 10 20

www.igi.org



THIS DOCUMENT WAS PRODUCED WITH THE FOLLOWING SECURITY MEASURES: SPECIAL DOCUMENT PAPER, INK SCREENS, WATERMARK, BACKGROUND DESIGNS, HOLOGRAM AND OTHER SECURITY FEATURES NOT LISTED AND DO EXCEED DOCUMENT SECURITY INDUSTRY GUIDELINE

May 29, 2026	1.52 CARAT	Vs 1	61.8%	50%	Medium to Slightly Thick (Faceted)	Painted	EXCELLENT	NONE	689 LG7 2540398	Comments: This Laboratory Grown Diamond was created by Chemical Vapor Deposition (CVD) growth process. Type IIa
GI Report No. LG7 2540398	Color Weight	Clarity Grade	Cut Grade	Depth	Girdle	Fluorescence	Symmetry	Surface	Proportions	
ROUND BRILLIANT	Color Grade	Clarity Grade	Cut Grade	Depth	Girdle	Fluorescence	Symmetry	Surface	Proportions	