

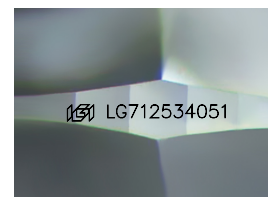
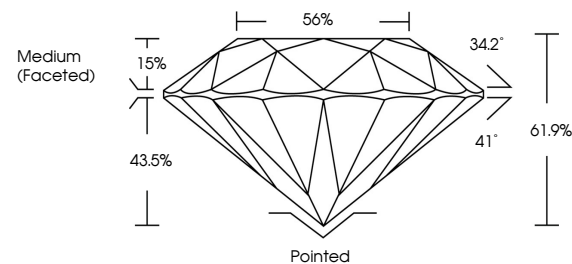


ELECTRONIC COPY

LABORATORY GROWN DIAMOND REPORT

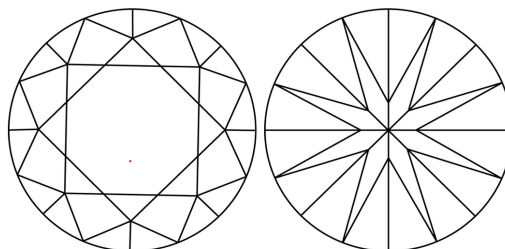
LG712534051
Report verification at igi.org

PROPORTIONS



Sample Image Used

CLARITY CHARACTERISTICS



KEY TO SYMBOLS

Red symbols indicate internal characteristics.
Green symbols indicate external characteristics.

COLOR

D E F G H I J Faint Very Light Light

CLARITY

IF WS¹⁻² VS¹⁻² SI¹⁻² |¹⁻³

Internally Flawless	Very Very Slightly Included	Very Slightly Included	Slightly Included	Included
------------------------	--------------------------------	---------------------------	----------------------	----------

LABORATORY GROWN DIAMOND REPORT



May 29, 2025

IGI Report Number **LG712534051**Description **LABORATORY GROWN DIAMOND**Shape and Cutting Style **ROUND BRILLIANT**

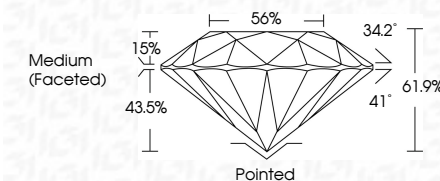
Measurements 9.34 - 9.36 X 5.79 MM

GRADING RESULTS

Carat Weight **3.09 CARATS**

Color Grade **E**Clarity Grade **VS 2**

Cut Grade **IDEAL**



ADDITIONAL GRADING INFORMATION

Polish EXCELLENT

Symmetry **EXCELLENT**Fluorescence **NONE**Inscription(s) LG712534051

Comments: This Laboratory Grown Diamond was created by Chemical Vapor Deposition (CVD) growth process.
Type IIa



© IGI 2020, International Gemological Institute

FD - 10 20

www.igi.org



THIS DOCUMENT WAS PRODUCED WITH THE FOLLOWING SECURITY MEASURES: SPECIAL DOCUMENT PAPER, INK SCREENS, WATERMARK, BACKGROUND DESIGNS, HOLOGRAM AND OTHER SECURITY FEATURES NOT LISTED AND DO EXCEED DOCUMENT SECURITY INDUSTRY GUIDELINES

May 29, 2026	3.09 CARATS	WS 2	Pointed	Culet	Fluorescence	Inscriptions(s)	None	1691 G772534061
(G) Report No. G772534061	E	WS 2	EXCELLENT	Polish	Symmetry		EXCELLENT	
ROUND BRILLIANT		IDEAL	EXCELLENT					
		61.7%	56%					
		Medium (Faceted)						
3.04 - 3.56 X 5.79 MM								
Carat Weight		Color Grade	Clarity Grade	Cut Grade	Depth	Table	Grade	

Comments:
 The Laboratory has examined the Growth Diamond was
 a natural product of the natural vapor deposition
 (CVD) growth process.
 Type IIG