



**ELECTRONIC COPY**

LG712530521  
Report verification at igi.org



May 29, 2025

IGI Report Number **LG712530521**

Description **LABORATORY GROWN DIAMOND**

Shape and Cutting Style **ROUND POLYGON MIXED CUT**

Measurements **7.23 - 7.24 X 4.30 MM**

**GRADING RESULTS**

Carat Weight **1.61 CARAT**

Color Grade **D**

Clarity Grade **VVS 1**

May 29, 2025  
IGI Report Number **LG712530521**  
Description **LABORATORY GROWN DIAMOND**  
Shape and Cutting Style **ROUND POLYGON MIXED CUT**  
Measurements **7.23 - 7.24 X 4.30 MM**

**GRADING RESULTS**

Carat Weight **1.61 CARAT**

Color Grade **D**

Clarity Grade **VVS 1**

**ADDITIONAL GRADING INFORMATION**

Polish **EXCELLENT**

Symmetry **EXCELLENT**

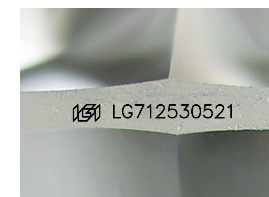
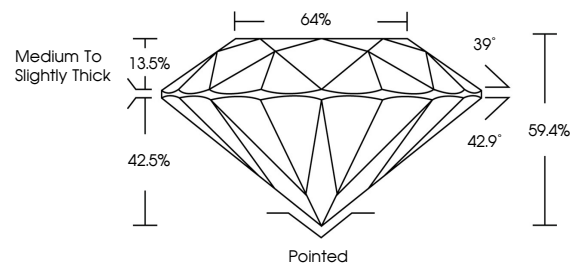
Fluorescence **NONE**

Inscription(s) **IGI LG712530521**

Comments: As Grown - No indication of post-growth treatment.

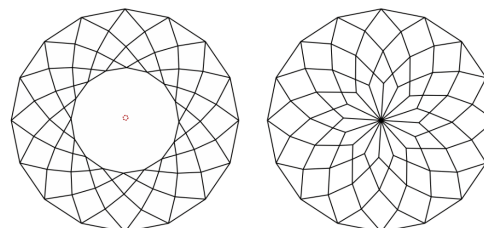
This Laboratory Grown Diamond was created by High Pressure High Temperature (HPHT) growth process. Type II

**PROPORTIONS**



Sample Image Used

**CLARITY CHARACTERISTICS**



**KEY TO SYMBOLS**

Red symbols indicate internal characteristics.  
Green symbols indicate external characteristics.

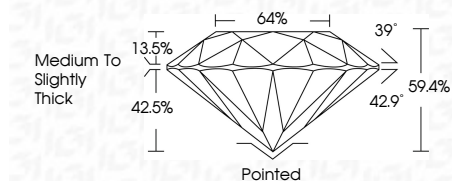
**COLOR**

D E F G H I J Faint Very Light Light

**CLARITY**

IF VS<sup>1-2</sup> VS<sup>1-2</sup> SI<sup>1-2</sup> I<sup>1-3</sup>

Internally Flawless Very Very Slightly Included Very Slightly Included Slightly Included Included



**ADDITIONAL GRADING INFORMATION**

Polish **EXCELLENT**

Symmetry **EXCELLENT**

Fluorescence **NONE**

Inscription(s) **IGI LG712530521**

Comments: As Grown - No indication of post-growth treatment.

This Laboratory Grown Diamond was created by High Pressure High Temperature (HPHT) growth process. Type II



**IGI**



May 29, 2025  
IGI Report No LG712530521  
ROUND POLYGON MIXED CUT  
7.23 - 7.24 X 4.30 MM  
1.61 CARAT  
D  
VVS 1  
64%  
39°  
42.9°  
42.5%  
13.5%  
59.4%  
Medium to Slightly Thick  
Pointed  
EXCELLENT  
EXCELLENT  
NONE  
IGI LG712530521

Comments: As Grown - No indication of post-growth treatment.  
This Laboratory Grown Diamond was created by High Pressure High Temperature (HPHT) growth process. Type II