



**ELECTRONIC COPY**

## LABORATORY GROWN DIAMOND REPORT

|                         |                          |
|-------------------------|--------------------------|
| May 29, 2025            |                          |
| IGI Report Number       | LG712527233              |
| Description             | LABORATORY GROWN DIAMOND |
| Shape and Cutting Style | ROUND BRILLIANT          |
| Measurements            | 8.12 - 8.15 X 5.12 MM    |

## GRADING RESULTS

|               |             |
|---------------|-------------|
| Carat Weight  | 2.08 CARATS |
| Color Grade   | E           |
| Clarity Grade | VVS 2       |
| Cut Grade     | EXCELLENT   |

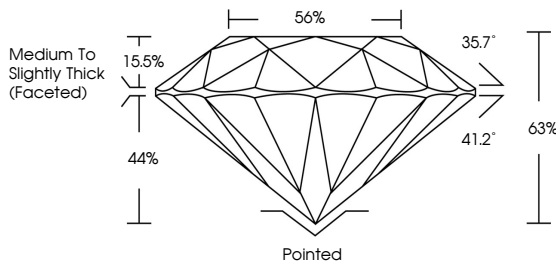
### ADDITIONAL GRADING INFORMATION

|                |   |
|----------------|---|
| Polish         | EXCELLENT   |
| Symmetry       | EXCELLENT   |
| Fluorescence   | NONE  |
| Inscription(s) |  LG712527233 |

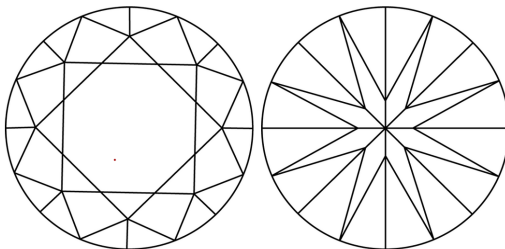
Comments: This Laboratory Grown Diamond was created by Chemical Vapor Deposition (CVD) growth process.  
Type IIa

LG712527233  
Report verification at [igi.org](https://igi.org)

## PROPORTIONS

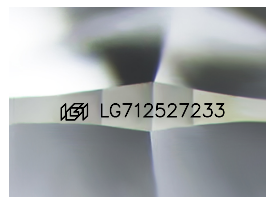


## CLARITY CHARACTERISTICS



## KEY TO SYMBOLS

Red symbols indicate internal characteristics.  
Green symbols indicate external characteristics.



Sample Image Used

## COLOR

D E F G H I J Faint Very Light Light

## CLARITY

IF      WS<sup>1-2</sup>      VS<sup>1-2</sup>      SI<sup>1-2</sup>      |<sup>1-3</sup>

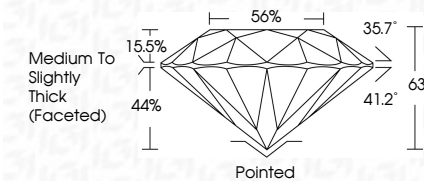
| Internally<br>Flawless | Very Very<br>Slightly Included | Very<br>Slightly Included | Slightly<br>Included | Included |
|------------------------|--------------------------------|---------------------------|----------------------|----------|
|------------------------|--------------------------------|---------------------------|----------------------|----------|



|                         |                          |
|-------------------------|--------------------------|
| May 29, 2025            |                          |
| IGI Report Number       | LG712527233              |
| Description             | LABORATORY GROWN DIAMOND |
| Shape and Cutting Style | ROUND BRILLIANT          |
| Measurements            | 8.12 - 8.15 X 5.12 MM    |

## GRADING RESULTS

|               |             |
|---------------|-------------|
| Carat Weight  | 2.08 CARATS |
| Color Grade   | E           |
| Clarity Grade | VVS 2       |
| Cut Grade     | EXCELLENT   |



### ADDITIONAL GRADING INFORMATION

|   |  |
|---|--|
| Polish  | EXCELLENT  |
| Symmetry  | EXCELLENT  |
| Fluorescence  | NONE   |
| Inscription(s)  |  LG712527233 |
| <p>Comments: This Laboratory Grown Diamond was created by Chemical Vapor Deposition (CVD) growth process.</p> <p>Type IIa</p> |  |



IG



© IGI 2020, International Gemological Institute

FD - 10 20

**www.igi.org**



May 29, 2025  
IGI Report No LG712527233

|  |               |                                    |
|--|---------------|------------------------------------|
| 100% RADIANT<br>18.12 - 8.15 X 5.12 MM | Carat Weight  | 2.08 CARATS                        |
|  | Color Grade   | E                                  |
|  | Clarity Grade | VVS 2                              |
|  | Cut Grade     | EXCELLENT                          |
|  | Depth         | 63%                                |
|  | Table         | 56%                                |
|  | Girdle        | Medium To Slightly Thick (Faceted) |
|  | Culet         | Pointed                            |
|  | Polish        | EXCELLENT                          |
|  | Symmetry      | EXCELLENT                          |
|  | Fluorescence  | NONE                               |

**Comments:**  
This Laboratory Grown Diamond was created by Chemical Vapor Deposition (CVD) growth process.