



ELECTRONIC COPY

LG712526723
Report verification at igi.org



May 28, 2025
IGI Report Number LG712526723
Description LABORATORY GROWN DIAMOND
Shape and Cutting Style CUT CORNERED RECTANGULAR MODIFIED BRILLIANT
Measurements 11.41 X 7.76 X 5.18 MM
GRADING RESULTS
Carat Weight 4.00 CARATS
Color Grade D
Clarity Grade VS 1

May 28, 2025
IGI Report Number LG712526723
Description LABORATORY GROWN DIAMOND
Shape and Cutting Style CUT CORNERED RECTANGULAR MODIFIED BRILLIANT
Measurements 11.41 X 7.76 X 5.18 MM

GRADING RESULTS

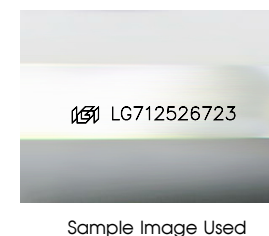
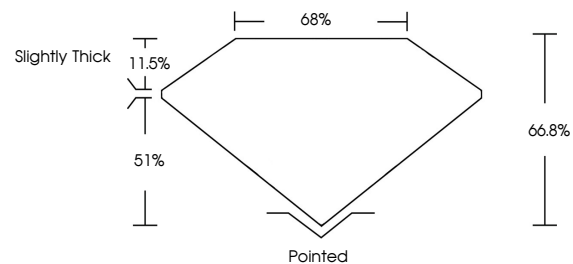
Carat Weight 4.00 CARATS
Color Grade D
Clarity Grade VS 1

ADDITIONAL GRADING INFORMATION

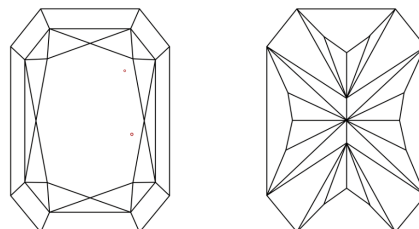
Polish EXCELLENT
Symmetry EXCELLENT
Fluorescence NONE
Inscription(s) LG712526723

Comments: This Laboratory Grown Diamond was created by Chemical Vapor Deposition (CVD) growth process. Type IIa

PROPORTIONS



CLARITY CHARACTERISTICS



KEY TO SYMBOLS

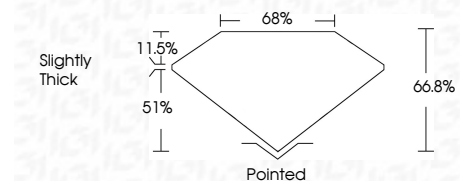
Red symbols indicate internal characteristics.
Green symbols indicate external characteristics.

COLOR

D E F G H I J Faint Very Light Light

CLARITY

IF WS 1-2 VS 1-2 SI 1-2 I 1-3
Internally Flawless Very Very Slightly Included Very Slightly Included Slightly Included Included



ADDITIONAL GRADING INFORMATION

Polish EXCELLENT
Symmetry EXCELLENT
Fluorescence NONE
Inscription(s) LG712526723
Comments: This Laboratory Grown Diamond was created by Chemical Vapor Deposition (CVD) growth process. Type IIa



May 28, 2025
IGI Report No LG712526723
CUT CORNERED RECT. MODIFIED BRILLIANT
11.41 X 7.76 X 5.18 MM
4.00 CARATS
D
VS 1
66.8%
68%
Slightly Thick
Pointed
EXCELLENT
EXCELLENT
NONE
Inscription(s) LG712526723
Comments: This Laboratory Grown Diamond was created by Chemical Vapor Deposition (CVD) growth process. Type IIa