



ELECTRONIC COPY

LG712515468 Report verification at igi.org



May 27, 2025 IGI Report Number LG712515468 Description LABORATORY GROWN DIAMOND Shape and Cutting Style CUT CORNERED RECTANGULAR MODIFIED BRILLIANT Measurements 7.81 X 5.38 X 3.68 MM GRADING RESULTS Carat Weight 1.33 CARAT Color Grade F Clarity Grade VVS 2

LABORATORY GROWN DIAMOND REPORT

May 27, 2025 IGI Report Number LG712515468 Description LABORATORY GROWN DIAMOND Shape and Cutting Style CUT CORNERED RECTANGULAR MODIFIED BRILLIANT Measurements 7.81 X 5.38 X 3.68 MM

GRADING RESULTS

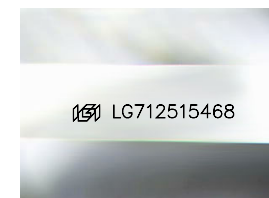
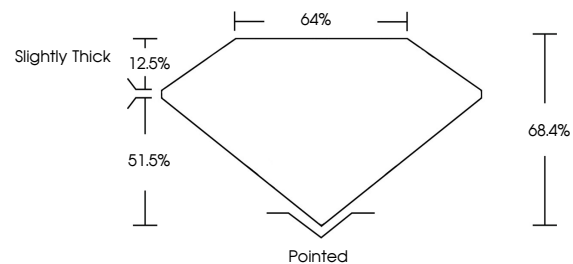
Carat Weight 1.33 CARAT Color Grade F Clarity Grade VVS 2

ADDITIONAL GRADING INFORMATION

Polish EXCELLENT Symmetry EXCELLENT Fluorescence NONE Inscription(s) LG712515468

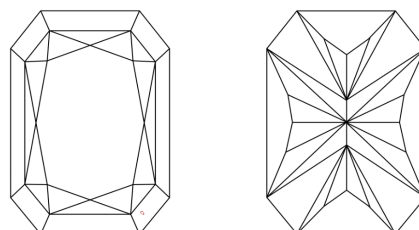
Comments: This Laboratory Grown Diamond was created by Chemical Vapor Deposition (CVD) growth process. Type IIa

PROPORTIONS



Sample Image Used

CLARITY CHARACTERISTICS



KEY TO SYMBOLS

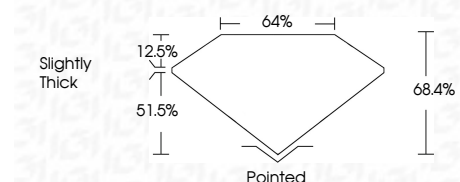
Red symbols indicate internal characteristics. Green symbols indicate external characteristics.

COLOR

D E F G H I J Faint Very Light Light

CLARITY

IF WS 1-2 VS 1-2 SI 1-2 I 1-3 Internally Flawless Very Very Slightly Included Very Slightly Included Slightly Included Included



ADDITIONAL GRADING INFORMATION

Polish EXCELLENT Symmetry EXCELLENT Fluorescence NONE Inscription(s) LG712515468 Comments: This Laboratory Grown Diamond was created by Chemical Vapor Deposition (CVD) growth process. Type IIa



May 27, 2025 IGI Report No LG712515468 CUT CORNERED RECT. MODIFIED BRILLIANT 1.33 CARAT F VVS 2 68.4% 64% Slightly Thick Pointed EXCELLENT EXCELLENT NONE LG712515468

Comments: This Laboratory Grown Diamond was created by Chemical Vapor Deposition (CVD) growth process. Type IIa

Certified SUSTAINABILITY RATED DIAMOND SCS GLOBAL SERVICES All certified diamonds come with an individual certificate, ONLY available at an accredited retailer. FOR THE SUSTAINABILITY RATED CERTIFICATE, SCAN HERE

