



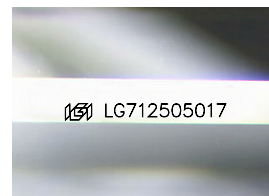
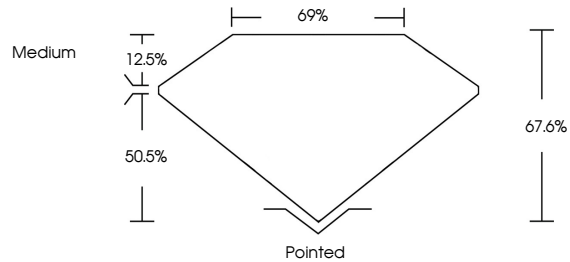
**INTERNATIONAL
GEMOLOGICAL
INSTITUTE**

ELECTRONIC COPY

LABORATORY GROWN DIAMOND REPORT

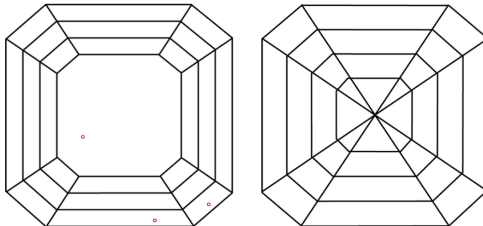
LG712505017
Report verification at igi.org

PROPORTIONS



Sample Image Used

CLARITY CHARACTERISTICS



KEY TO SYMBOLS

Red symbols indicate internal characteristics.
Green symbols indicate external characteristics.

COLOR

D E F G H I J Faint Very Light Light

CLARITY

IF	WS ¹⁻²	VS ¹⁻²	SI ¹⁻²	I ¹⁻³
----	-------------------	-------------------	-------------------	------------------

Internally Flawless	Very Very Slightly Included	Very Slightly Included	Slightly Included	Included
------------------------	--------------------------------	---------------------------	----------------------	----------



© IGI 2020, International Gemological Institute

FD - 10 20

www.igi.org

LABORATORY GROWN DIAMOND REPORT



May 27, 2025

IGI Report Number **LG712505017**

Description	LABORATORY GROWN DIAMOND
-------------	--------------------------

Shape and Cutting Style **SQUARE EMERALD CUT**

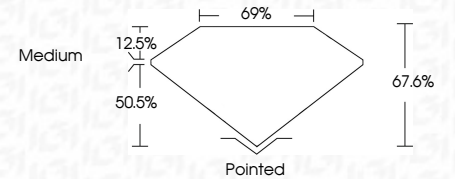
Measurements **6.31 X 6.20 X 4.19 MM**

GRADING RESULTS

Carat Weight **1.48 CARAT**

Color Grade **D**

Clarity Grade VS 1



ADDITIONAL GRADING INFORMATION

Polish **EXCELLENT**Symmetry **EXCELLENT**Fluorescence **NONE**Inscription(s) LG712505017

Comments: This Laboratory Grown Diamond was created by Chemical Vapor Deposition (CVD) growth process.
Type IIa



IGI

May 27, 2025	IGI Report No.IGI71950017	1.48 CARAT	D	Vs1	Pointed	Comments: This Laboratory Grown Diamond was created by Chemical Vapor Deposition (CVD) growth process. Type IIa
SQUARE EMERALD CUT			67.6%	69%	Excellent	
3.31 X 4.20 X 4.19 MM				Medium	Excellent	
Color Weight					NONE	
Color Grade					IGI LG71950017	
Clarity Grade					Culet	Fluorescence Description(s)
Depth					Polish	
Table					Symmetry	
Girdle						

This Laboratory Grown Diamond was created by Chemical Vapor Deposition (CVD) growth process.
Type IIa