



**ELECTRONIC COPY**

LG712502919  
Report verification at igi.org



May 29, 2025  
IGI Report Number **LG712502919**  
Description **LABORATORY GROWN DIAMOND**  
Shape and Cutting Style **KITE STEP CUT**  
Measurements **14.92 X 9.36 X 6.27 MM**  
**GRADING RESULTS**  
Carat Weight **4.15 CARATS**  
Color Grade **E**  
Clarity Grade **VVS 1**

**LABORATORY GROWN DIAMOND REPORT**

May 29, 2025  
IGI Report Number **LG712502919**  
Description **LABORATORY GROWN DIAMOND**  
Shape and Cutting Style **KITE STEP CUT**  
Measurements **14.92 X 9.36 X 6.27 MM**

**GRADING RESULTS**

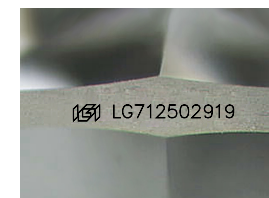
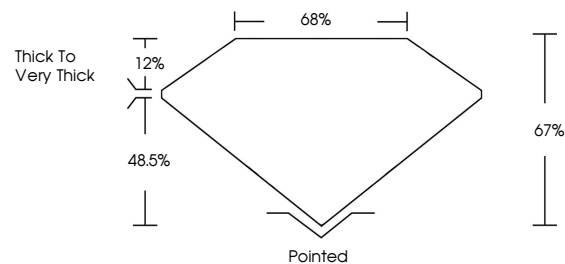
Carat Weight **4.15 CARATS**  
Color Grade **E**  
Clarity Grade **VVS 1**

**ADDITIONAL GRADING INFORMATION**

Polish **EXCELLENT**  
Symmetry **EXCELLENT**  
Fluorescence **NONE**  
Inscription(s) **IGI LG712502919**

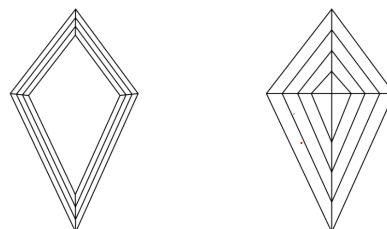
Comments: This Laboratory Grown Diamond was created by Chemical Vapor Deposition (CVD) growth process. Type IIa

**PROPORTIONS**



Sample Image Used

**CLARITY CHARACTERISTICS**



**KEY TO SYMBOLS**

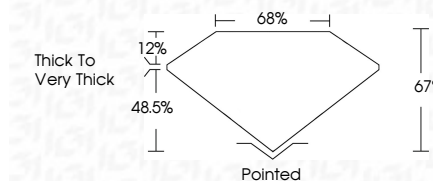
Red symbols indicate internal characteristics.  
Green symbols indicate external characteristics.

**COLOR**

D E F G H I J Faint Very Light Light

**CLARITY**

IF	WS <sup>1-2</sup>	VS <sup>1-2</sup>	SI <sup>1-2</sup>	I <sup>1-3</sup>
Internally Flawless	Very Very Slightly Included	Very Slightly Included	Slightly Included	Included



**ADDITIONAL GRADING INFORMATION**

Polish **EXCELLENT**  
Symmetry **EXCELLENT**  
Fluorescence **NONE**  
Inscription(s) **IGI LG712502919**  
Comments: This Laboratory Grown Diamond was created by Chemical Vapor Deposition (CVD) growth process. Type IIa



May 29, 2025  
IGI Report No LG712502919  
KITE STEP CUT  
14.92 X 9.36 X 6.27 MM  
4.15 CARATS  
E  
VVS 1  
67%  
68%  
Thick to Very Thick  
Pointed  
EXCELLENT  
EXCELLENT  
NONE  
IGI LG712502919  
Comments: This Laboratory Grown Diamond was created by Chemical Vapor Deposition (CVD) growth process. Type IIa