



ELECTRONIC COPY

LG711528052
Report verification at igi.org

LABORATORY GROWN DIAMOND REPORT

June 11, 2025
IGI Report Number LG711528052
Description LABORATORY GROWN DIAMOND
Shape and Cutting Style CUT CORNERED RECTANGULAR MODIFIED BRILLIANT
Measurements 8.49 X 5.48 X 3.76 MM

GRADING RESULTS

Carat Weight 1.53 CARAT
Color Grade D
Clarity Grade VS 1

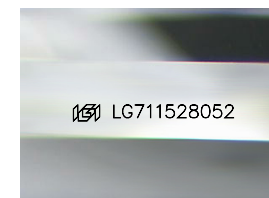
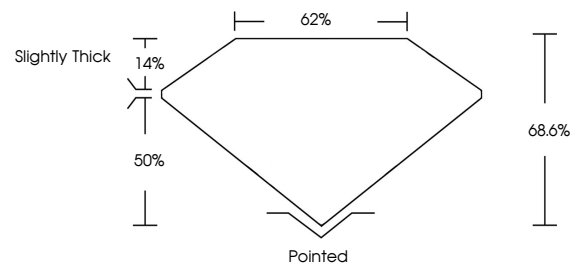
ADDITIONAL GRADING INFORMATION

Polish EXCELLENT
Symmetry EXCELLENT
Fluorescence NONE

Inscription(s) LG711528052

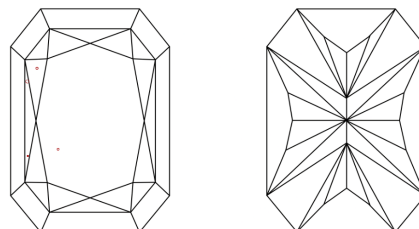
Comments: This Laboratory Grown Diamond was created by Chemical Vapor Deposition (CVD) growth process. Type IIa

PROPORTIONS



Sample Image Used

CLARITY CHARACTERISTICS



KEY TO SYMBOLS

Red symbols indicate internal characteristics.
Green symbols indicate external characteristics.

COLOR

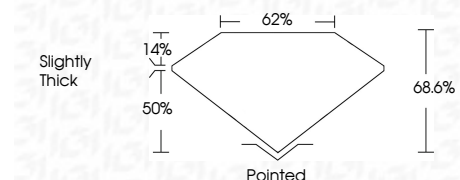
D E F G H I J Faint Very Light Light

CLARITY

IF WS 1-2 VS 1-2 SI 1-2 I 1-3
Internally Flawless Very Very Slightly Included Very Slightly Included Slightly Included Included



June 11, 2025
IGI Report Number LG711528052
Description LABORATORY GROWN DIAMOND
Shape and Cutting Style CUT CORNERED RECTANGULAR MODIFIED BRILLIANT
Measurements 8.49 X 5.48 X 3.76 MM
GRADING RESULTS
Carat Weight 1.53 CARAT
Color Grade D
Clarity Grade VS 1



ADDITIONAL GRADING INFORMATION

Polish EXCELLENT
Symmetry EXCELLENT
Fluorescence NONE
Inscription(s) LG711528052
Comments: This Laboratory Grown Diamond was created by Chemical Vapor Deposition (CVD) growth process. Type IIa



June 11, 2025
IGI Report No LG711528052
CUT CORNERED RECT. MODIFIED BRILLIANT
8.49 X 5.48 X 3.76 MM
1.53 CARAT
D
VS 1
68.6%
62%
Slightly Thick
Pointed
EXCELLENT
EXCELLENT
NONE
LG711528052

Comments: This Laboratory Grown Diamond was created by Chemical Vapor Deposition (CVD) growth process. Type IIa