

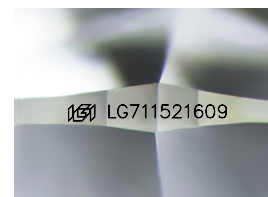
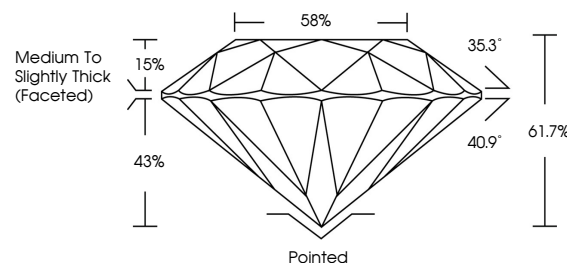


**ELECTRONIC COPY**

## LABORATORY GROWN DIAMOND REPORT

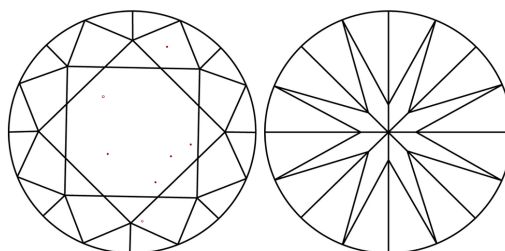
LG711521609  
Report verification at [igi.org](https://igi.org)

## PROPORTIONS



Sample Image Used

## CLARITY CHARACTERISTICS



## KEY TO SYMBOLS

Red symbols indicate internal characteristics.  
Green symbols indicate external characteristics.

## COLOR

D E F G H I J Faint Very Light Light

## CLARITY

IF WS<sup>1-2</sup> VS<sup>1-2</sup> SI<sup>1-2</sup> |<sup>1-3</sup>

Internally Flawless	Very Very Slightly Included	Very Slightly Included	Slightly Included	Included
------------------------	--------------------------------	---------------------------	----------------------	----------



May 27, 2025

IGI Report Number **LG711521609**Description **LABORATORY GROWN DIAMOND**Shape and Cutting Style **ROUND BRILLIANT**

Measurements 6.58 - 6.61 X 4.07 MM

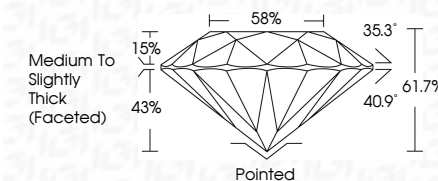
## GRADING RESULTS

Carat Weight 1.09 CARAT

Color Grade E

Clarity Grade VS 1

Cut Grade **IDEAL**



### ADDITIONAL GRADING INFORMATION

Polish EXCELLENT

Symmetry **EXCELLENT**Fluorescence NONEInscription(s)  LG711521609

Comments: This Laboratory Grown Diamond was created by Chemical Vapor Deposition (CVD) growth process.

Type IIa



© IGI 2020, International Gemological Institute

FD - 10 20

**www.igi.org**



THIS DOCUMENT WAS PRODUCED WITH THE FOLLOWING SECURITY MEASURES: SPECIAL DOCUMENT PAPER, INK SCREENS, WATERMARK, BACKGROUND DESIGNS, HOLOGRAM AND OTHER SECURITY FEATURES NOT LISTED AND DO EXCEED DOCUMENT SECURITY INDUSTRY GUIDELINES

May 27, 2025  
GI Report No LG711521609  
ROUND BRILLIANT

<b>CORONA</b>	<b>6.58 - 6.61 X 0.07 MM</b>	<b>1.09 CARAT E</b>
Carat Weight	Vs I	
Color Grade	IDSL	
Clarity Grade	61.7%	
Cut Grade	58%	
Depth	Medium To Slightly Thick (Faceted)	
Table		
Girdle		
Culet	Poined	
Polish	EXCELLENT	
Symmetry	EXCELLENT	
Fluorescence	NONE	
Comments:	see report page 3	

**Comments:**  
This Laboratory Grown Diamond was  
created by Chemical Vapor Deposition  
(CVD) growth process.