



**ELECTRONIC COPY**

LG711519102  
Report verification at igi.org



June 12, 2025

IGI Report Number **LG711519102**

Description **LABORATORY GROWN DIAMOND**

Shape and Cutting Style **BAGUETTE**

Measurements **12.07 X 6.27 X 4.22 MM**

**GRADING RESULTS**

Carat Weight **3.56 CARATS**

Color Grade **E**

Clarity Grade **VVS 1**

June 12, 2025  
IGI Report Number **LG711519102**  
Description **LABORATORY GROWN DIAMOND**  
Shape and Cutting Style **BAGUETTE**  
Measurements **12.07 X 6.27 X 4.22 MM**

**GRADING RESULTS**

Carat Weight **3.56 CARATS**

Color Grade **E**

Clarity Grade **VVS 1**

**ADDITIONAL GRADING INFORMATION**

Polish **EXCELLENT**

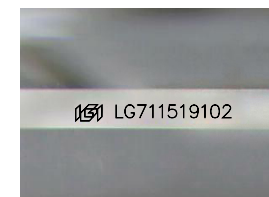
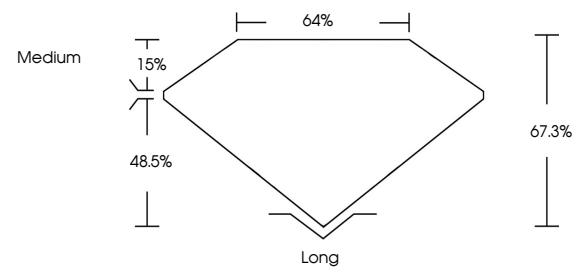
Symmetry **EXCELLENT**

Fluorescence **NONE**

Inscription(s) **IGI LG711519102**

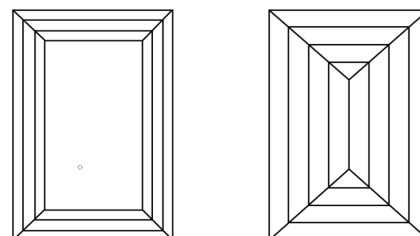
Comments: This Laboratory Grown Diamond was created by Chemical Vapor Deposition (CVD) growth process. Type IIa

**PROPORTIONS**



Sample Image Used

**CLARITY CHARACTERISTICS**



**KEY TO SYMBOLS**

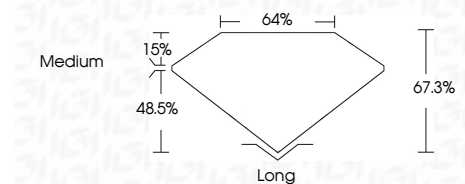
Red symbols indicate internal characteristics.  
Green symbols indicate external characteristics.

**COLOR**

D E F G H I J Faint Very Light Light

**CLARITY**

IF	WS <sup>1-2</sup>	VS <sup>1-2</sup>	SI <sup>1-2</sup>	I <sup>1-3</sup>
Internally Flawless	Very Very Slightly Included	Very Slightly Included	Slightly Included	Included



**ADDITIONAL GRADING INFORMATION**

Polish **EXCELLENT**

Symmetry **EXCELLENT**

Fluorescence **NONE**

Inscription(s) **IGI LG711519102**

Comments: This Laboratory Grown Diamond was created by Chemical Vapor Deposition (CVD) growth process. Type IIa



**IGI**



June 12, 2025  
IGI Report No LG711519102  
**BAGUETTE**  
12.07 X 6.27 X 4.22 MM  
3.56 CARATS  
E  
VVS 1  
67.3%  
48.5%  
Medium  
Long  
EXCELLENT  
EXCELLENT  
NONE  
IGI LG711519102

Comments: This Laboratory Grown Diamond was created by Chemical Vapor Deposition (CVD) growth process. Type IIa