



**ELECTRONIC COPY**

LG711515857  
Report verification at igi.org



June 4, 2025

IGI Report Number **LG711515857**

Description **LABORATORY GROWN DIAMOND**

Shape and Cutting Style **ROUND BRILLIANT**

Measurements **6.42 - 6.45 X 3.98 MM**

**GRADING RESULTS**

Carat Weight **1.04 CARAT**

Color Grade **D**

Clarity Grade **VVS 2**

Cut Grade **VERY GOOD**

June 4, 2025  
IGI Report Number **LG711515857**  
Description **LABORATORY GROWN DIAMOND**  
Shape and Cutting Style **ROUND BRILLIANT**  
Measurements **6.42 - 6.45 X 3.98 MM**

**GRADING RESULTS**

Carat Weight **1.04 CARAT**

Color Grade **D**

Clarity Grade **VVS 2**

Cut Grade **VERY GOOD**

**ADDITIONAL GRADING INFORMATION**

Polish **EXCELLENT**

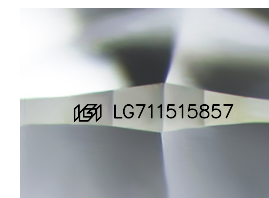
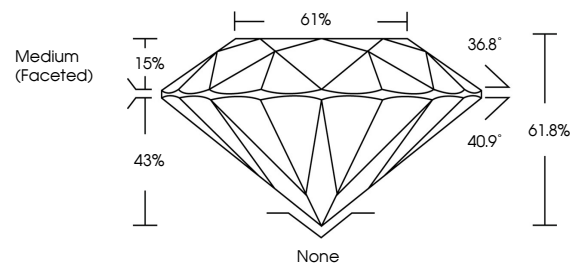
Symmetry **GOOD**

Fluorescence **NONE**

Inscription(s) **IGI LG711515857**

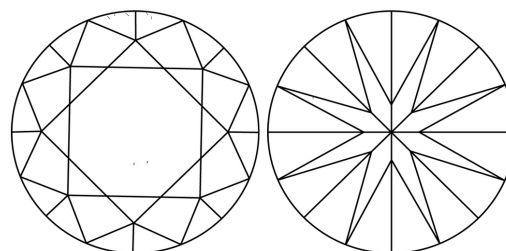
Comments: As Grown - No indication of post-growth treatment.  
This Laboratory Grown Diamond was created by High Pressure High Temperature (HPHT) growth process.  
Type II

**PROPORTIONS**



Sample Image Used

**CLARITY CHARACTERISTICS**



**KEY TO SYMBOLS**

Red symbols indicate internal characteristics.  
Green symbols indicate external characteristics.

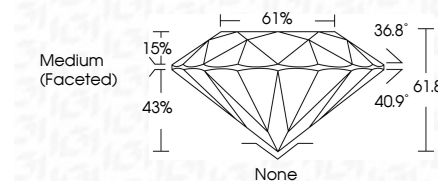
**COLOR**

D E F G H I J Faint Very Light Light

**CLARITY**

IF VS<sup>1-2</sup> VS<sup>1-2</sup> SI<sup>1-2</sup> I<sup>1-3</sup>

Internally Flawless Very Very Slightly Included Very Slightly Included Slightly Included Included



**ADDITIONAL GRADING INFORMATION**

Polish **EXCELLENT**

Symmetry **GOOD**

Fluorescence **NONE**

Inscription(s) **IGI LG711515857**

Comments: As Grown - No indication of post-growth treatment.  
This Laboratory Grown Diamond was created by High Pressure High Temperature (HPHT) growth process.  
Type II



**IGI**



June 4, 2025  
IGI Report No LG711515857  
ROUND BRILLIANT  
6.42 - 6.45 X 3.98 MM  
1.04 CARAT  
D  
VVS 2  
VERY GOOD  
6.05%  
61%  
Medium (Faceted)  
None  
EXCELLENT  
GOOD  
NONE  
IGI LG711515857  
None  
EXCELLENT  
GOOD  
NONE  
IGI LG711515857  
Comments: As Grown - No indication of post-growth treatment.  
This Laboratory Grown Diamond was created by High Pressure High Temperature (HPHT) growth process.  
Type II