

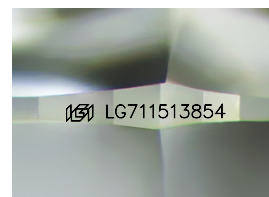
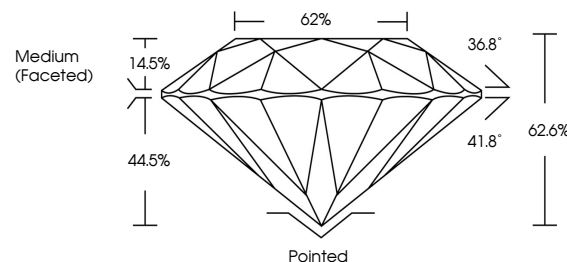


ELECTRONIC COPY

LABORATORY GROWN DIAMOND REPORT

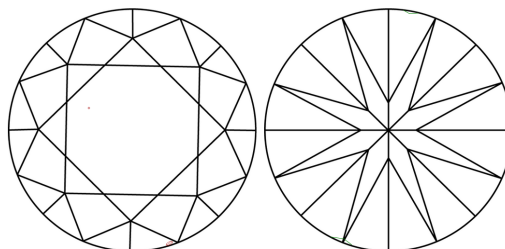
LG711513854
Report verification at lgi.org

PROPORTIONS



Sample Image Used

CLARITY CHARACTERISTICS



KEY TO SYMBOLS

Red symbols indicate internal characteristics.
Green symbols indicate external characteristics.

COLOR

D E F G H I J Faint Very Light Light

CLARITY

IF WS¹⁻² VS¹⁻² SI¹⁻² I¹⁻³

Internally Flawless	Very Very Slightly Included	Very Slightly Included	Slightly Included	Included
------------------------	--------------------------------	---------------------------	----------------------	----------



© IGI 2020, International Gemological Institute

FD - 10 20

www.igi.org

LABORATORY GROWN DIAMOND REPORT



May 26, 2025

IGI Report Number **LG711513854**Description **LABORATORY GROWN DIAMOND**Shape and Cutting Style **ROUND BRILLIANT**

Measurements 6.75 - 6.81 X 4.25 MM

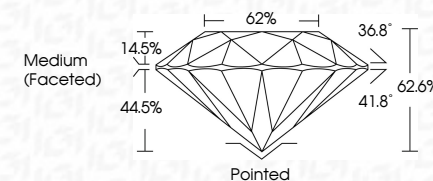
GRADING RESULTS

Carat Weight 1.22 CARAT

Color Grade	D
-------------	---

Clarity Grade VS 1

Cut Grade **VERY GOOD**



ADDITIONAL GRADING INFORMATION

Polish VERY GOOD

Symmetry **VERY GOOD**Fluorescence **NONE**Inscription(s) LG711513854

Comments: As Grown - No indication of post-growth treatment.

This Laboratory Grown Diamond was created by High Pressure High Temperature (HPHT) growth process.
Type II



May 24, 2026	1.22 CARAT	D	Vs 1	Painted	Comments: No. Growth: No indication of post-growth treatment. This Laboratory Grown Diamond was created by High Pressure High Temperature (HPHT) growth process. Type IIa
Report No. LG7113854	VERY GOOD	62.6%	VERY GOOD	VERY GOOD	
ROUND BRILLIANT		52%		NONE	
		Medium (Faceted)		88 LG7113854	
	Color Grade	Clarity Grade	Cut Grade	Symmetry	
	Carat Weight	Depth	Table	Fluorescence	
		Girdle		Inscriptions	