

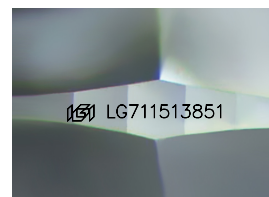
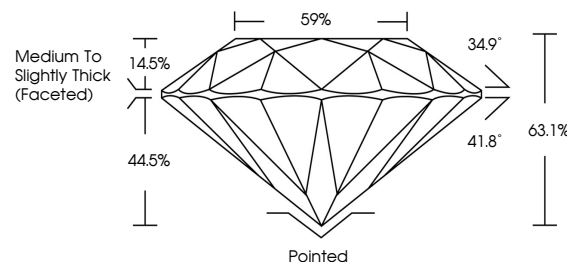


**ELECTRONIC COPY**

## LABORATORY GROWN DIAMOND REPORT

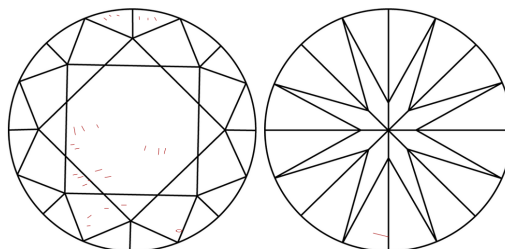
LG711513851  
Report verification at [lgi.org](https://lgi.org)

## PROPORTIONS



Sample Image Used

## CLARITY CHARACTERISTICS



## KEY TO SYMBOLS

Red symbols indicate internal characteristics.  
Green symbols indicate external characteristics.

## COLOR

D E F G H I J Faint Very Light Light

## CLARITY

IF WS<sup>1-2</sup> VS<sup>1-2</sup> SI<sup>1-2</sup> |<sup>1-3</sup>

Internally Flawless	Very Very Slightly Included	Very Slightly Included	Slightly Included	Included
------------------------	--------------------------------	---------------------------	----------------------	----------



© IGI 2020, International Gemological Institute

FD - 10 20

**www.igi.org**

## LABORATORY GROWN DIAMOND REPORT



May 26, 2025

IGI Report Number **LG711513851**Description **LABORATORY GROWN DIAMOND**Shape and Cutting Style **ROUND BRILLIANT**

Measurements 6.84 - 6.90 X 4.34 MM

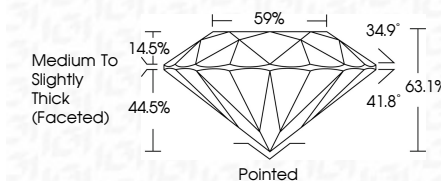
## GRADING RESULTS

Carat Weight 1.27 CARAT

Color Grade D

Clarity Grade VS 2

Cut Grade **VERY GOOD**



### ADDITIONAL GRADING INFORMATION

Polish VERY GOOD

Symmetry **GOOD**Fluorescence **NONE**Inscription(s)  LG711513851

Comments: As Grown - No indication of post-growth treatment.

This Laboratory Grown Diamond was created by High Pressure High Temperature (HPHT) growth process.

Type II



	Vs 2	1.27 CARAT
	VERY GOOD	D
	63.1%	
	95%	
	Medium To Slightly Med (focaled)	
	Painted	
	VERY GOOD	
	GOOD	
	NONE	
	#8 LG71513851	

Comments:

No Indication of post-growth treatment.

This Laboratory Grown Diamond was created by High Pressure High Temperature (HPHT) growth process.

Type II