



ELECTRONIC COPY

LABORATORY GROWN DIAMOND REPORT

May 27, 2025	
IGI Report Number	LG711513817
Description	LABORATORY GROWN DIAMOND
Shape and Cutting Style	ROUND BRILLIANT
Measurements	6.44 - 6.49 X 4.15 MM

GRADING RESULTS

Carat Weight	1.09 CARAT
Color Grade	E
Clarity Grade	VS 1
Cut Grade	VERY GOOD

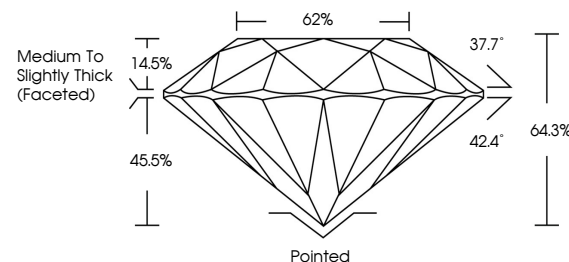
ADDITIONAL GRADING INFORMATION

Polish	VERY GOOD
Symmetry	GOOD
Fluorescence	NONE
Inscription(s)	151 LG711513817

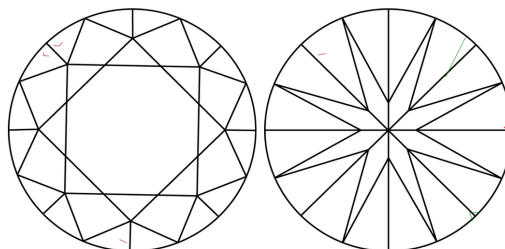
Comments: As Grown - No indication of post-growth treatment.
This Laboratory Grown Diamond was created by High Pressure High Temperature (HPHT) growth process.
Type II

LG711513817
Report verification at lgi.org

PROPORTIONS

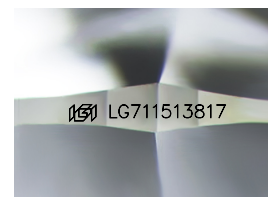


CLARITY CHARACTERISTICS



KEY TO SYMBOLS

Red symbols indicate internal characteristics.
Green symbols indicate external characteristics.



Sample Image Used

COLOR

D E F G H I J Faint Very Light Light

CLARITY

IF WS¹⁻² VS¹⁻² SI¹⁻² |¹⁻³

Internally Flawless	Very Very Slightly Included	Very Slightly Included	Slightly Included	Included
------------------------	--------------------------------	---------------------------	----------------------	----------



© IGI 2020, International Gemological Institute

FD - 10 20

www.igi.org

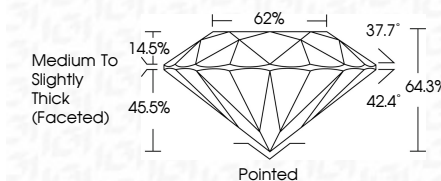
LABORATORY GROWN DIAMOND REPORT



May 27, 2025	
IGI Report Number	LG711513817
Description	LABORATORY GROWN DIAMOND
Shape and Cutting Style	ROUND BRILLIANT
Measurements	6.44 - 6.49 X 4.15 MM

GRADING RESULTS

Carat Weight	1.09 CARAT
Color Grade	E
Clarity Grade	VS 1
Cut Grade	VERY GOOD



ADDITIONAL GRADING INFORMATION

Polish	VERY GOOD
Symmetry	GOOD
Fluorescence	NONE
Inscription(s)	 LG7111513817
Comments: As Grown - No indication of post-growth treatment.	
This Laboratory Grown Diamond was created by High Pressure High Temperature (HPHT) growth process.	
Type II	

[illegible]