



**ELECTRONIC COPY**

## LABORATORY GROWN DIAMOND REPORT

|                         |                          |
|-------------------------|--------------------------|
| May 29, 2025            |                          |
| IGI Report Number       | LG711513651              |
| Description             | LABORATORY GROWN DIAMOND |
| Shape and Cutting Style | ROUND BRILLIANT          |
| Measurements            | 6.30 - 6.45 X 4.01 MM    |

## GRADING RESULTS

|               |            |
|---------------|------------|
| Carat Weight  | 1.01 CARAT |
| Color Grade   | E          |
| Clarity Grade | VVS 2      |
| Cut Grade     | VERY GOOD  |

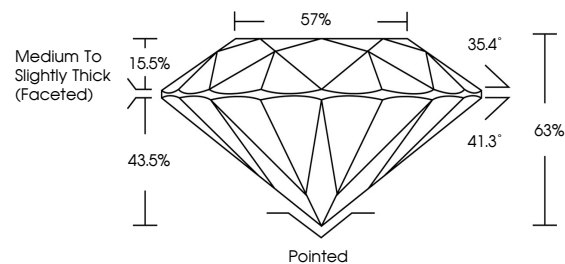
### ADDITIONAL GRADING INFORMATION

|                |   |
|----------------|---|
| Polish         | VERY GOOD   |
| Symmetry       | GOOD  |
| Fluorescence   | NONE  |
| Inscription(s) |  LG711513651 |

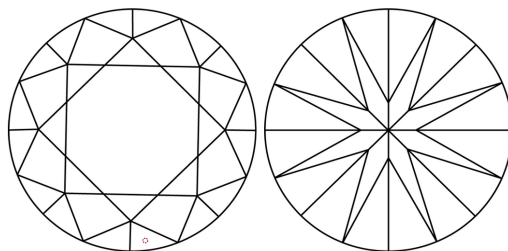
Comments: As Grown - No indication of post-growth treatment.  
This Laboratory Grown Diamond was created by High Pressure High Temperature (HPHT) growth process.  
Type II

LG711513651  
Report verification at [lgi.org](https://lgi.org)

## PROPORTIONS

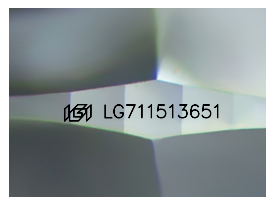


## CLARITY CHARACTERISTICS



## KEY TO SYMBOLS

Red symbols indicate internal characteristics.  
Green symbols indicate external characteristics.



Sample Image Used

## COLOR

D E F G H I J Faint Very Light Light

## CLARITY

IF WS<sup>1-2</sup> VS<sup>1-2</sup> S<sup>1-2</sup> |<sup>1-3</sup>

|                        |                                |                           |                      |          |
|------------------------|--------------------------------|---------------------------|----------------------|----------|
| Internally<br>Flawless | Very Very<br>Slightly Included | Very<br>Slightly Included | Slightly<br>Included | Included |
|------------------------|--------------------------------|---------------------------|----------------------|----------|

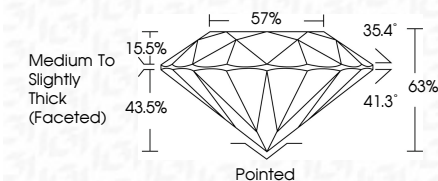
## LABORATORY GROWN DIAMOND REPORT



|                         |                          |
|-------------------------|--------------------------|
| May 29, 2025            |                          |
| IGI Report Number       | LG711513651              |
| Description             | LABORATORY GROWN DIAMOND |
| Shape and Cutting Style | ROUND BRILLIANT          |
| Measurements            | 6.30 - 6.45 X 4.01 MM    |

## GRADING RESULTS

|               |            |
|---------------|------------|
| Carat Weight  | 1.01 CARAT |
| Color Grade   | E          |
| Clarity Grade | VVS 2      |
| Cut Grade     | VERY GOOD  |



### ADDITIONAL GRADING INFORMATION

|  |                            |
|--|----------------------------|
| Polish   | VERY GOOD                  |
| Symmetry   | GOOD                       |
| Fluorescence   | NONE                       |
| Inscription(s)   | <del>(G)</del> LG711513651 |
| Comments: As Grown - No indication of post-growth treatment.                                       |                            |
| This Laboratory Grown Diamond was created by High Pressure High Temperature (HPHT) growth process. |                            |
| Type II  |                            |



© IGI 2020, International Gemological Institute

FD - 10 20



THIS DOCUMENT WAS PRODUCED WITH THE FOLLOWING SECURITY MEASURES: SPECIAL DOCUMENT PAPER, INK SCREENS, WATERMARK, BACKGROUND DESIGNS, HOLOGRAM AND OTHER SECURITY FEATURES NOT LISTED AND DO EXCEED DOCUMENT SECURITY INDUSTRY GUIDELINES

**www.igi.org**

|                           |                                     |
|---------------------------|-------------------------------------|
| May 29, 2026              | 1.01 CARAT                          |
| (G) Report No. G271161961 | E                                   |
| ROUND BRILLIANT           | VS 2                                |
|                           | VERY GOOD                           |
|                           | 63%                                 |
|                           | 57%                                 |
|                           | Medium to Slightly Thick (6 scored) |
|                           | Pointed                             |
|                           | VERY GOOD                           |
|                           | GOOD                                |
|                           | NONE                                |
|                           | #691671161961                       |

Comments: No indication of post-growth treatment.

The Laboratory Grown Diamond was created by High Pressure High Temperature (HPHT) growth process.