



**ELECTRONIC COPY**

LG711512093  
Report verification at igi.org



May 29, 2025

IGI Report Number **LG711512093**

Description **LABORATORY GROWN DIAMOND**

Shape and Cutting Style **CUT CORNERED  
RECTANGULAR MODIFIED  
BRILLIANT**

Measurements **9.74 X 7.97 X 5.55 MM**

**GRADING RESULTS**

Carat Weight **4.16 CARATS**

Color Grade **FANCY VIVID GREEN**

Clarity Grade **VS 1**

**LABORATORY GROWN DIAMOND REPORT**

May 29, 2025

IGI Report Number **LG711512093**

Description **LABORATORY GROWN DIAMOND**

Shape and Cutting Style **CUT CORNERED RECTANGULAR  
MODIFIED BRILLIANT**

Measurements **9.74 X 7.97 X 5.55 MM**

**GRADING RESULTS**

Carat Weight **4.16 CARATS**

Color Grade **FANCY VIVID GREEN**

Clarity Grade **VS 1**

**ADDITIONAL GRADING INFORMATION**

Polish **EXCELLENT**

Symmetry **EXCELLENT**

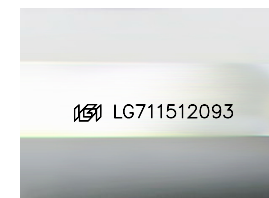
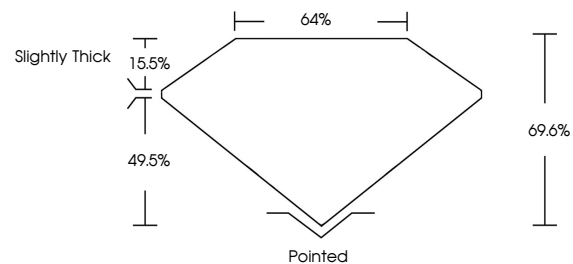
Fluorescence **NONE**

Inscription(s) **IGI LG711512093**

Comments: This Laboratory Grown Diamond was created by Chemical Vapor Deposition (CVD) growth process.

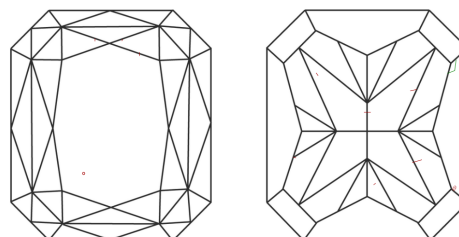
Indications of post-growth treatment.

**PROPORTIONS**



Sample Image Used

**CLARITY CHARACTERISTICS**



**KEY TO SYMBOLS**

Red symbols indicate internal characteristics.  
Green symbols indicate external characteristics.

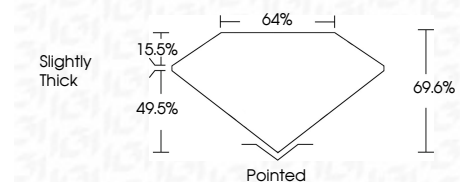
**COLOR**

D E F G H I J Faint Very Light Light

**CLARITY**

IF WS<sup>1-2</sup> VS<sup>1-2</sup> SI<sup>1-2</sup> I<sup>1-3</sup>

Internally Flawless Very Very Slightly Included Very Slightly Included Slightly Included Included



**ADDITIONAL GRADING INFORMATION**

Polish **EXCELLENT**

Symmetry **EXCELLENT**

Fluorescence **NONE**

Inscription(s) **IGI LG711512093**

Comments: This Laboratory Grown Diamond was created by Chemical Vapor Deposition (CVD) growth process.

Indications of post-growth treatment.



**IGI**



May 29, 2025  
IGI Report No LG711512093  
CUT CORNERED RECT. MODIFIED BRILLIANT  
9.74 X 7.97 X 5.55 MM  
4.16 CARATS  
FANCY VIVID GREEN  
VS 1  
69.6%  
15.5%  
Slightly Thick  
Pointed  
EXCELLENT  
EXCELLENT  
NONE  
IGI LG711512093

Comments: This Laboratory Grown Diamond was created by Chemical Vapor Deposition (CVD) growth process. Indications of post-growth treatment.