



ELECTRONIC COPY

LABORATORY GROWN DIAMOND REPORT

May 29, 2025	
IGI Report Number	LG711511649
Description	LABORATORY GROWN DIAMOND
Shape and Cutting Style	ROUND BRILLIANT
Measurements	8.48 - 8.53 X 5.09 MM

GRADING RESULTS

Carat Weight	2.26 CARATS
Color Grade	FANCY INTENSE PINK
Clarity Grade	VS 1
Cut Grade	IDEAL

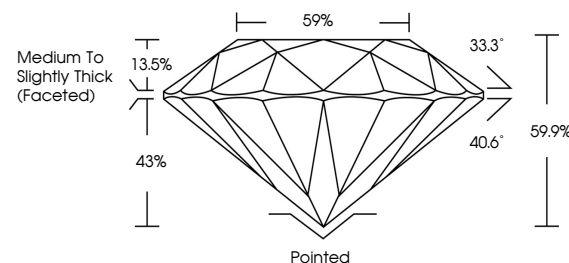
ADDITIONAL GRADING INFORMATION

Polish	EXCELLENT
Symmetry	EXCELLENT
Fluorescence	SLIGHT
Inscription(s)	15 LG711511649

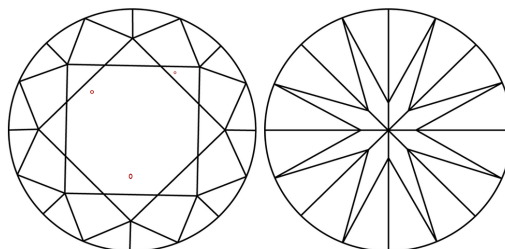
Comments: This Laboratory Grown Diamond was created by Chemical Vapor Deposition (CVD) growth process.
Indications of post-growth treatment.

LG711511649
Report verification at igi.org

PROPORTIONS

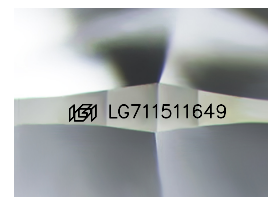


CLARITY CHARACTERISTICS



KEY TO SYMBOLS

Red symbols indicate internal characteristics.
Green symbols indicate external characteristics.



Sample Image Used

COLOR

D E F G H I J Faint Very Light Light

CLARITY

IF WS¹⁻² VS¹⁻² SI¹⁻² |¹⁻³

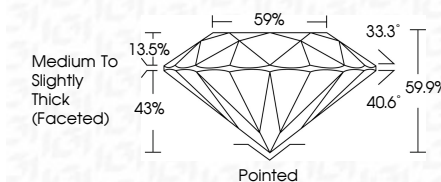
Internally Flawless	Very Very Slightly Included	Very Slightly Included	Slightly Included	Included
---------------------	-----------------------------	------------------------	-------------------	----------



May 29, 2025	
IGI Report Number	LG711511649
Description	LABORATORY GROWN DIAMOND
Shape and Cutting Style	ROUND BRILLIANT
Measurements	8.48 - 8.53 X 5.09 MM

GRADING RESULTS

Carat Weight	2.26 CARATS
Color Grade	FANCY INTENSE PINK
Clarity Grade	VS 1
Cut Grade	IDEAL



ADDITIONAL GRADING INFORMATION

Polish	EXCELLENT
Symmetry	EXCELLENT
Fluorescence	SLIGHT
Inscription(s)	 LG711511649

Comments: This Laboratory Grown Diamond was created by Chemical Vapor Deposition (CVD) growth process.
Indications of post-growth treatment.



© IGI 2020, International Gemological Institute

FD - 10 20

www.igi.org

THIS DOCUMENT WAS PRODUCED WITH THE FOLLOWING SECURITY MEASURES: SPECIAL DOCUMENT PAPER, INK SCREENS, WATERMARK, BACKGROUND DESIGNS, HOLOGRAM AND OTHER SECURITY FEATURES NOT LISTED AND DO EXCEED DOCUMENT SECURITY INDUSTRY GUIDELINES

May 29, 2025
GI Report No LG711511649
ROUND BRILLIANT

4.48 - 8.53 X 6.09 MM	
Carat Weight	2.26 CARATS
Color Grade	FANCY INTENSE PINK
Cut Grade	VS 1
Depth	IDEAL
Table	95.9%
Girdle	59%
Culet	Medium to Slightly Thick (Faceted)
Polish	Pointed
Symmetry	EXCELLENT
Fluorescence	EXCELLENT SLIGHT

Comments:
This Laboratory Grown Diamond was
created by Chemical Vapor Deposition
(CVD) growth process.