



ELECTRONIC COPY

LG711506306
Report verification at igi.org



May 30, 2025

IGI Report Number **LG711506306**

Description **LABORATORY GROWN DIAMOND**

Shape and Cutting Style **SQUARE EMERALD CUT**

Measurements **5.49 X 5.39 X 3.65 MM**

GRADING RESULTS

Carat Weight **1.01 CARAT**

Color Grade **FANCY VIVID BLUE**

Clarity Grade **VS 1**

May 30, 2025
IGI Report Number **LG711506306**
Description **LABORATORY GROWN DIAMOND**
Shape and Cutting Style **SQUARE EMERALD CUT**
Measurements **5.49 X 5.39 X 3.65 MM**

GRADING RESULTS

Carat Weight **1.01 CARAT**

Color Grade **FANCY VIVID BLUE**

Clarity Grade **VS 1**

ADDITIONAL GRADING INFORMATION

Polish **EXCELLENT**

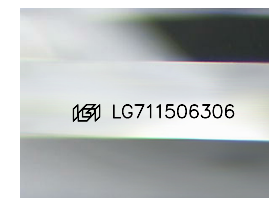
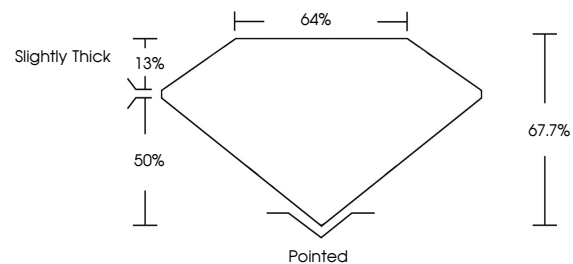
Symmetry **EXCELLENT**

Fluorescence **NONE**

Inscription(s) **IGI LG711506306**

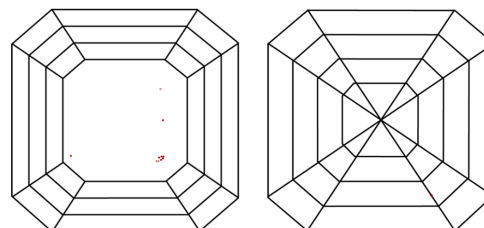
Comments: This Laboratory Grown Diamond was created by High Pressure High Temperature (HPHT) growth process. Indications of post-growth treatment.

PROPORTIONS



Sample Image Used

CLARITY CHARACTERISTICS



KEY TO SYMBOLS

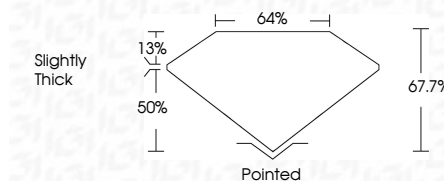
Red symbols indicate internal characteristics.
Green symbols indicate external characteristics.

COLOR

D E F G H I J Faint Very Light Light

CLARITY

IF	VS ¹⁻²	VS ¹⁻²	SI ¹⁻²	I ¹⁻³
Internally Flawless	Very Very Slightly Included	Very Slightly Included	Slightly Included	Included



ADDITIONAL GRADING INFORMATION

Polish **EXCELLENT**

Symmetry **EXCELLENT**

Fluorescence **NONE**

Inscription(s) **IGI LG711506306**

Comments: This Laboratory Grown Diamond was created by High Pressure High Temperature (HPHT) growth process. Indications of post-growth treatment.



IGI



May 30, 2025	1.01 CARAT	FANCY VIVID BLUE	VS 1	67.7%	64%	Slightly Thick	Pointed	EXCELLENT	EXCELLENT	NONE	IGI LG711506306
IGI Report No LG711506306	Carat Weight	Color Grade	Clarity Grade	Depth	Table	Graile	Culet	Polish	Symmetry	Fluorescence	Inscription(s)
SQUARE EMERALD CUT	5.49 X 5.39 X 3.65 MM										

Comments: This Laboratory Grown Diamond was created by High Pressure High Temperature (HPHT) growth process. Indications of post-growth treatment.