

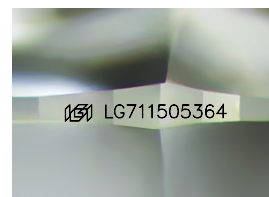
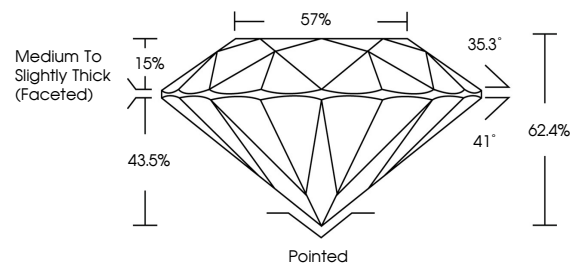


**ELECTRONIC COPY**

## LABORATORY GROWN DIAMOND REPORT

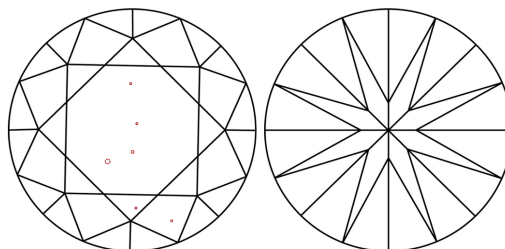
LG711505364  
Report verification at [igi.org](https://igi.org)

## PROPORTIONS



Sample Image Used

## CLARITY CHARACTERISTICS



## KEY TO SYMBOLS

Red symbols indicate internal characteristics.  
Green symbols indicate external characteristics.



**www.igi.org**

## COLOR

D E F G H I J Faint Very Light Light

## CLARITY

IF      VWS<sup>1-2</sup>      VS<sup>1-2</sup>      SI<sup>1-2</sup>      I<sup>1-3</sup>

Internally Flawless	Very Very Slightly Included	Very Slightly Included	Slightly Included	Included
------------------------	--------------------------------	---------------------------	----------------------	----------



© IGI 2020, International Gemological Institute

FD - 10 20

THIS DOCUMENT WAS PRODUCED WITH THE FOLLOWING SECURITY MEASURES: SPECIAL DOCUMENT PAPER, INK SCREENS, WATERMARK, BACKGROUND DESIGNS, HOLOGRAM AND OTHER SECURITY FEATURES NOT LISTED AND DO EXCEED DOCUMENT SECURITY INDUSTRY GUIDELINES

## LABORATORY GROWN DIAMOND REPORT



May 27, 2025

IGI Report Number **LG711505364**

Description	LABORATORY GROWN DIAMOND
-------------	--------------------------

Shape and Cutting Style **ROUND BRILLIANT**

Measurements 7.32 - 7.38 X 4.59 MM

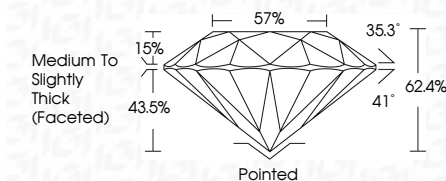
## GRADING RESULTS

Carat Weight 1.52 CARAT

Color Grade	D
-------------	---

Clarity Grade VS 1

Cut Grade **IDEAL**



### ADDITIONAL GRADING INFORMATION

Polish **EXCELLENT**Symmetry **EXCELLENT**Fluorescence **NONE**Inscription(s)  LG711505364

Comments: HEARTS & ARROWS

This Laboratory Grown Diamond was created by Chemical Vapor Deposition (CVD) growth process.  
Type IIa



IG

May 27, 2025  
IGI Report No LG711505364  
ROUND BRILLIANT

7.32 - 7.38 X 4.69 MM	1.62 CARAT	D
Carat Weight	VS 1	IDEAL
Color Grade	62.4%	57%
Cut Grade	Medium to Slightly Thick (Faceted)	
Depth	Pointed	
Table	EXCELLENT	
Girdle	SYMMETRY	
Culet	FLUORESCENCE	
Polish	NONE	
Symmetry	Aver 1271 100364	
Fluorescence		

**Comments:**  
HEARTS & ARROWS  
This Laboratory Grown Diamond was  
created by Chemical Vapor Deposition  
(CVD) growth process.