



# INTERNATIONAL GEMOLOGICAL INSTITUTE

ELECTRONIC COPY

LG711504847

## LABORATORY GROWN DIAMOND REPORT

May 24, 2025  
IGI Report Number **LG711504847**  
Description **LABORATORY GROWN DIAMOND**  
Shape and Cutting Style **PRINCESS CUT**  
Measurements **5.45 X 5.42 X 3.84 MM**

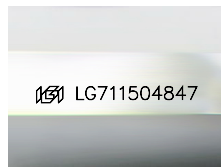
### GRADING RESULTS

Carat Weight **0.99 CARAT**  
Color Grade **E**  
Clarity Grade **VVS 2**

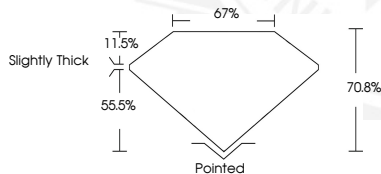
### ADDITIONAL GRADING INFORMATION

Polish **EXCELLENT**  
Symmetry **EXCELLENT**  
Fluorescence **NONE**  
Inscription(s) **IGI LG711504847**

Comments: This Laboratory Grown Diamond was created by Chemical Vapor Deposition (CVD) growth process.  
Type IIa



Sample Image Used



May 24, 2025  
IGI Report Number **LG711504847**  
PRINCESS CUT  
LABORATORY GROWN DIAMOND  
5.45 X 5.42 X 3.84 MM  
Carat Weight **0.99 CARAT**  
Color Grade **E**  
Clarity Grade **VVS 2**  
Polish **EXCELLENT**  
Symmetry **EXCELLENT**  
Fluorescence **NONE**  
Inscription(s) **IGI LG711504847**  
Comments: This Laboratory Grown Diamond was created by Chemical Vapor Deposition (CVD) growth process. Type IIa



May 24, 2025  
IGI Report Number **LG711504847**  
PRINCESS CUT  
LABORATORY GROWN DIAMOND  
5.45 X 5.42 X 3.84 MM  
Carat Weight **0.99 CARAT**  
Color Grade **E**  
Clarity Grade **VVS 2**  
Polish **EXCELLENT**  
Symmetry **EXCELLENT**  
Fluorescence **NONE**  
Inscription(s) **IGI LG711504847**  
Comments: This Laboratory Grown Diamond was created by Chemical Vapor Deposition (CVD) growth process. Type IIa



THIS DOCUMENT WAS PRODUCED WITH THE FOLLOWING SECURITY MEASURES: SPECIAL DOCUMENT PAPER, INK SCREENS, WATERMARK, BACKGROUND DESIGNS, HOLOGRAM AND OTHER SECURITY FEATURES NOT LISTED AND DO EXCEED DOCUMENT SECURITY INDUSTRY GUIDELINES.

For terms & conditions and to verify this report, please visit [www.igi.org](http://www.igi.org)