



**INTERNATIONAL
GEMOLOGICAL
INSTITUTE**

ELECTRONIC COPY

LG711504464
Report verification at [igi.org](https://www.igi.org)

LABORATORY GROWN DIAMOND REPORT



May 26, 2025

IGI Report Number **LG711504464**Description **LABORATORY GROWN DIAMOND**

Shape and Cutting Style **CUSHION MODIFIED
BRILLIANT**

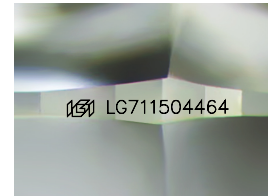
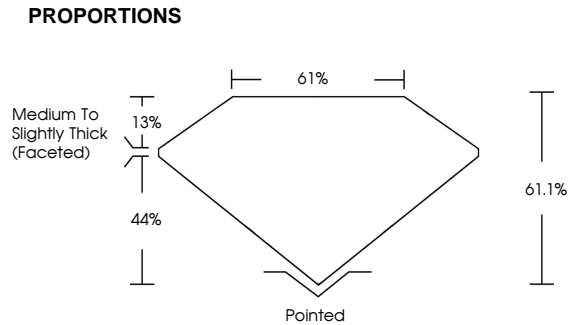
Measurements **8.45 X 6.35 X 3.88 MM**

GRADING RESULTS

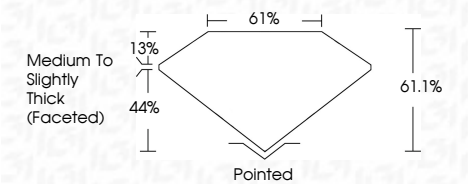
Carat Weight **1.54 CARAT**

Color Grade **D**

Clarity Grade VS 1



Sample Image Used



COLOR

D E F G H I J Faint Very Light Light

CLARITY

IF WS¹⁻² VS¹⁻² SI¹⁻² I¹⁻³

Internally Flawless	Very Very Slightly Included	Very Slightly Included	Slightly Included	Included
------------------------	--------------------------------	---------------------------	----------------------	----------



© IGI 2020, International Gemological Institute

FD - 10 20



THIS DOCUMENT WAS PRODUCED WITH THE FOLLOWING SECURITY MEASURES: SPECIAL DOCUMENT PAPER, INK SCREENS, WATERMARK BACKGROUND DESIGNS, HOLOGRAM AND OTHER SECURITY FEATURES NOT LISTED AND DO EXCEED DOCUMENT SECURITY INDUSTRY GUIDELINES

www.igi.org



IGI

May 26, 2025	IGI Report No. G71190464	CUSHION MODIFIED BRILLANT
8.45 X 4.35 X 3.88 MM	1.54 CARAT	D
Color Weight	VS 1	61.1%
Carat Grade	61%	Medium to Slightly Thick (facet0)
Clarity Grade	Poished	NONE
Depth	EXCELLENT	1691 G71190464
Table	EXCELLENT	
Girdle	Symmetry	
Culet	Fluorescence	
Polish	Inscriptions(s)	

Comments:
This Laboratory Grown Diamond was created by Chemical Vapor Deposition (CVD) growth process.
Type IId

This Laboratory Grown Diamond was created by Chemical Vapor Deposition (CVD) growth process.
Type IIa