



**ELECTRONIC COPY**

LG710594286  
Report verification at igi.org



May 26, 2025

IGI Report Number **LG710594286**

Description **LABORATORY GROWN DIAMOND**

Shape and Cutting Style **PEAR STEP CUT**

Measurements **10.00 X 6.36 X 3.84 MM**

**GRADING RESULTS**

Carat Weight **1.57 CARAT**

Color Grade **E**

Clarity Grade **VVS 2**

May 26, 2025  
IGI Report Number **LG710594286**  
Description **LABORATORY GROWN DIAMOND**  
Shape and Cutting Style **PEAR STEP CUT**  
Measurements **10.00 X 6.36 X 3.84 MM**

**GRADING RESULTS**

Carat Weight **1.57 CARAT**

Color Grade **E**

Clarity Grade **VVS 2**

**ADDITIONAL GRADING INFORMATION**

Polish **EXCELLENT**

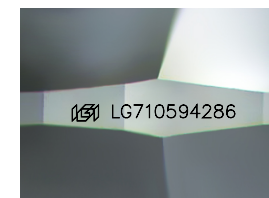
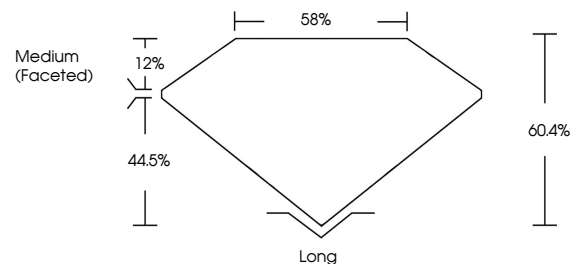
Symmetry **EXCELLENT**

Fluorescence **NONE**

Inscription(s) **IGI LG710594286**

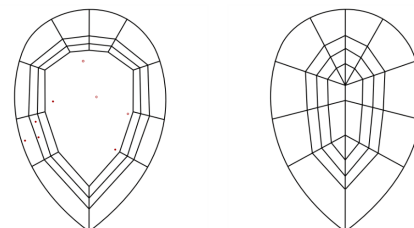
Comments: This Laboratory Grown Diamond was created by Chemical Vapor Deposition (CVD) growth process.  
Type IIa

**PROPORTIONS**



Sample Image Used

**CLARITY CHARACTERISTICS**



**KEY TO SYMBOLS**

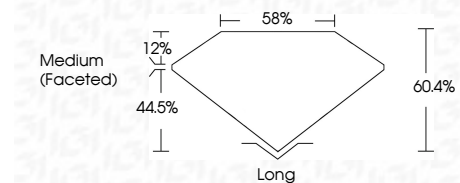
Red symbols indicate internal characteristics.  
Green symbols indicate external characteristics.

**COLOR**

D E F G H I J Faint Very Light Light

**CLARITY**

IF	VS <sup>1-2</sup>	VS <sup>1-2</sup>	SI <sup>1-2</sup>	I <sup>1-3</sup>
Internally Flawless	Very Very Slightly Included	Very Slightly Included	Slightly Included	Included



**ADDITIONAL GRADING INFORMATION**

Polish **EXCELLENT**

Symmetry **EXCELLENT**

Fluorescence **NONE**

Inscription(s) **IGI LG710594286**

Comments: This Laboratory Grown Diamond was created by Chemical Vapor Deposition (CVD) growth process.  
Type IIa



**IGI**



May 26, 2025	IGI Report No LG710594286	PEAR STEP CUT	1.57 CARAT	E	VVS 2	60.4%	58%	Medium (Faceted)	Long	EXCELLENT	EXCELLENT	NONE	IGI LG710594286
10.00 X 6.36 X 3.84 MM	Carat Weight	Color Grade	Clarity Grade	Table	Girdle	Culet	Polish	Symmetry	Fluorescence	Inscription(s)	Comments: This Laboratory Grown Diamond was created by Chemical Vapor Deposition (CVD) growth process. Type IIa		