



ELECTRONIC COPY

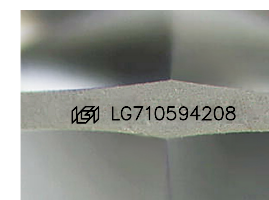
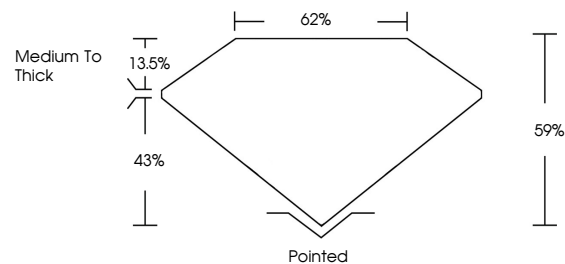
LG710594208
Report verification at igi.org



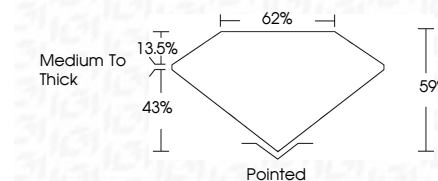
May 28, 2025
IGI Report Number **LG710594208**
Description **LABORATORY GROWN DIAMOND**
Shape and Cutting Style **OCTAGONAL MODIFIED BRILLIANT**
Measurements **7.14 X 7.28 X 4.27 MM**
GRADING RESULTS
Carat Weight **1.30 CARAT**
Color Grade **E**
Clarity Grade **VVS 2**

May 28, 2025
IGI Report Number **LG710594208**
Description **LABORATORY GROWN DIAMOND**
Shape and Cutting Style **OCTAGONAL MODIFIED BRILLIANT**
Measurements **7.14 X 7.28 X 4.27 MM**

PROPORTIONS



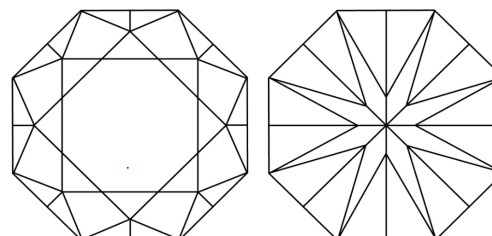
Sample Image Used



GRADING RESULTS

Carat Weight **1.30 CARAT**
Color Grade **E**
Clarity Grade **VVS 2**

CLARITY CHARACTERISTICS



ADDITIONAL GRADING INFORMATION

Polish **EXCELLENT**
Symmetry **EXCELLENT**
Fluorescence **NONE**
Inscription(s) **IGI LG710594208**

COLOR

D E F G H I J Faint Very Light Light

CLARITY

IF VVS¹⁻² VS¹⁻² SI¹⁻² I¹⁻³

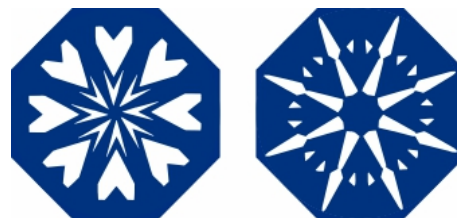
Internally Flawless Very Very Slightly Included Very Slightly Included Slightly Included Included

ADDITIONAL GRADING INFORMATION

Polish **EXCELLENT**
Symmetry **EXCELLENT**
Fluorescence **NONE**
Inscription(s) **IGI LG710594208**
Comments: HEARTS & ARROWS
This Laboratory Grown Diamond was created by Chemical Vapor Deposition (CVD) growth process. Type IIa

KEY TO SYMBOLS

Red symbols indicate internal characteristics.
Green symbols indicate external characteristics.



IGI

May 28, 2025
IGI Report No LG710594208
OCTAGONAL MODIFIED BRILLIANT
7.14 X 7.28 X 4.27 MM
1.30 CARAT E
VVS 2
E
62%
62%
Medium to Thick
Pointed
EXCELLENT
EXCELLENT
NONE
IGI LG710594208
Comments: Hearts & Arrows
This Laboratory Grown Diamond was created by Chemical Vapor Deposition (CVD) growth process. Type IIa