

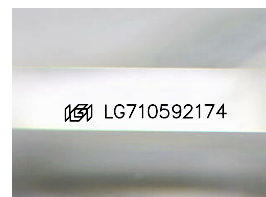
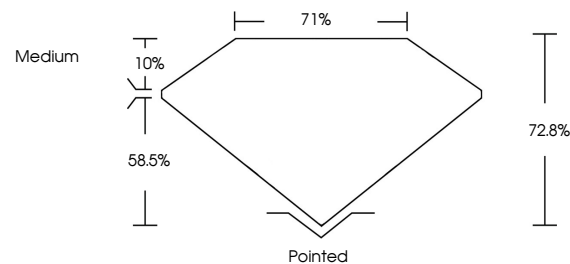


ELECTRONIC COPY

LABORATORY GROWN DIAMOND REPORT

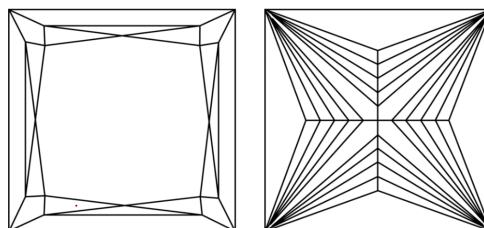
LG710592174
Report verification at igi.org

PROPORTIONS



Sample Image Used

CLARITY CHARACTERISTICS



KEY TO SYMBOLS

Red symbols indicate internal characteristics.
Green symbols indicate external characteristics.

COLOR

D E F G H I J Faint Very Light Light

CLARITY

IF VWS¹⁻² VS¹⁻² SI¹⁻² I¹⁻³

Internally Flawless	Very Very Slightly Included	Very Slightly Included	Slightly Included	Included
------------------------	--------------------------------	---------------------------	----------------------	----------

LABORATORY GROWN DIAMOND REPORT



June 13, 2025

IGI Report Number **LG710592174**

Description	LABORATORY GROWN DIAMOND
-------------	--------------------------

Shape and Cutting Style **PRINCESS CUT**

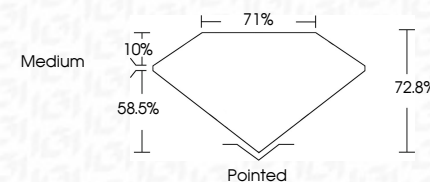
Measurements **6.93 X 6.83 X 4.97 MM**

GRADING RESULTS

Carat Weight **2.05 CARATS**

Color Grade E

Clarity Grade **INTERNALLY FLAWLESS**



ADDITIONAL GRADING INFORMATION

Polish **EXCELLENT**Symmetry **EXCELLENT**Fluorescence **NONE**Inscription(s) LG710592174

Comments: This Laboratory Grown Diamond was created by Chemical Vapor Deposition (CVD) growth process.
Type IIa



www.igi.org

© IGI 2020, International Gemological Institute

FD - 10 20



THIS DOCUMENT WAS PRODUCED WITH THE FOLLOWING SECURITY MEASURES: SPECIAL DOCUMENT PAPER, INK SCREENS, WATERMARK, BACKGROUND DESIGNS, HOLOGRAM AND OTHER SECURITY FEATURES NOT LISTED AND DO EXCEED DOCUMENT SECURITY INDUSTRY GUIDELINES

June 13, 2025
 IGI Report No LG710592174
 PRINCESS CLIT

2.05 CARATS	2.05 CARATS
Color Grade	E
Clarity Grade	IF
Depth	72.8%
Table	71%
Girdle	Medium
Polish	Polished
Symmetry	EXCELLENT
Fluorescence	EXCELLENT
Measurements (mm)	NONE
	Serial # 1710927174

Comments:
This Laboratory Grown Diamond was
created by Chemical Vapor Deposition
(CVD) growth process.