



**ELECTRONIC COPY**

LG710591289  
Report verification at igi.org



June 3, 2025

IGI Report Number **LG710591289**

Description **LABORATORY GROWN DIAMOND**

Shape and Cutting Style **EMERALD CUT**

Measurements **15.23 X 11.01 X 6.71 MM**

**GRADING RESULTS**

Carat Weight **12.50 CARATS**

Color Grade **FANCY INTENSE PINK**

Clarity Grade **VS 1**

June 3, 2025  
IGI Report Number **LG710591289**  
Description **LABORATORY GROWN DIAMOND**  
Shape and Cutting Style **EMERALD CUT**  
Measurements **15.23 X 11.01 X 6.71 MM**

**GRADING RESULTS**

Carat Weight **12.50 CARATS**

Color Grade **FANCY INTENSE PINK**

Clarity Grade **VS 1**

**ADDITIONAL GRADING INFORMATION**

Polish **EXCELLENT**

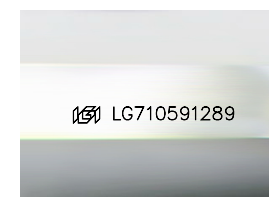
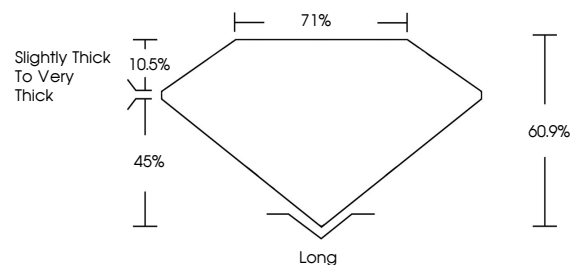
Symmetry **EXCELLENT**

Fluorescence **STRONG**

Inscription(s) **IGI LG710591289**

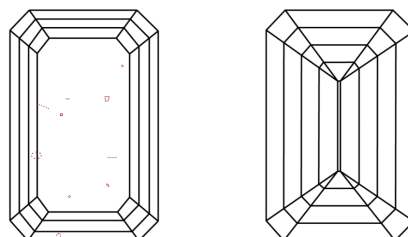
Comments: This Laboratory Grown Diamond was created by Chemical Vapor Deposition (CVD) growth process. Indications of post-growth treatment.

**PROPORTIONS**



Sample Image Used

**CLARITY CHARACTERISTICS**



**KEY TO SYMBOLS**

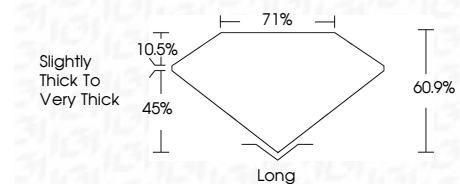
Red symbols indicate internal characteristics.  
Green symbols indicate external characteristics.

**COLOR**

D E F G H I J Faint Very Light Light

**CLARITY**

IF	VS <sup>1-2</sup>	VS <sup>1-2</sup>	SI <sup>1-2</sup>	I <sup>1-3</sup>
Internally Flawless	Very Very Slightly Included	Very Slightly Included	Slightly Included	Included



**ADDITIONAL GRADING INFORMATION**

Polish **EXCELLENT**

Symmetry **EXCELLENT**

Fluorescence **STRONG**

Inscription(s) **IGI LG710591289**

Comments: This Laboratory Grown Diamond was created by Chemical Vapor Deposition (CVD) growth process. Indications of post-growth treatment.



June 3, 2025  
IGI Report No LG710591289  
**EMERALD CUT**  
15.23 X 11.01 X 6.71 MM  
12.50 CARATS  
FANCY INTENSE PINK  
VS 1  
60.9%  
71%  
Slightly Thick To Very Thick  
Long  
EXCELLENT  
EXCELLENT  
STRONG  
IGI LG710591289  
Comments: This Laboratory Grown Diamond was created by Chemical Vapor Deposition (CVD) growth process. Indications of post-growth treatment.