



**ELECTRONIC COPY**

LG710590555  
Report verification at igi.org



June 18, 2025  
IGI Report Number **LG710590555**  
Description **LABORATORY GROWN DIAMOND**  
Shape and Cutting Style **CUSHION MODIFIED BRILLIANT**  
Measurements **8.16 X 6.42 X 4.35 MM**  
**GRADING RESULTS**  
Carat Weight **1.80 CARAT**  
Color Grade **FANCY VIVID GREEN**  
Clarity Grade **VS 1**

**LABORATORY GROWN DIAMOND REPORT**

June 18, 2025  
IGI Report Number **LG710590555**  
Description **LABORATORY GROWN DIAMOND**  
Shape and Cutting Style **CUSHION MODIFIED BRILLIANT**  
Measurements **8.16 X 6.42 X 4.35 MM**

**GRADING RESULTS**

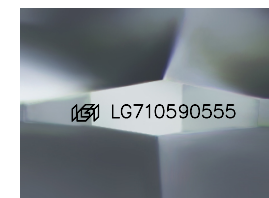
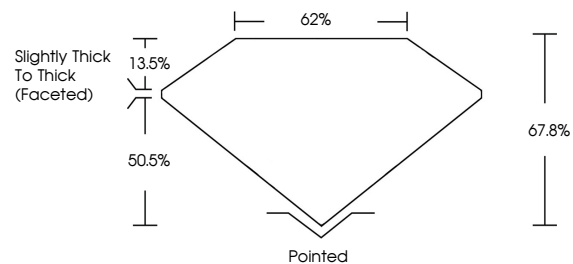
Carat Weight **1.80 CARAT**  
Color Grade **FANCY VIVID GREEN**  
Clarity Grade **VS 1**

**ADDITIONAL GRADING INFORMATION**

Polish **EXCELLENT**  
Symmetry **EXCELLENT**  
Fluorescence **VERY SLIGHT**  
Inscription(s) **LG710590555**

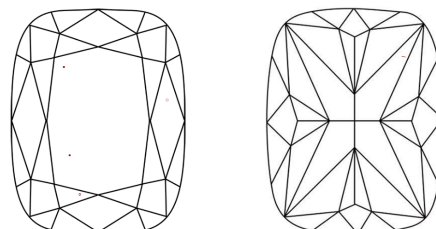
Comments: This Laboratory Grown Diamond was created by Chemical Vapor Deposition (CVD) growth process. Indications of post-growth treatment.

**PROPORTIONS**



Sample Image Used

**CLARITY CHARACTERISTICS**



**KEY TO SYMBOLS**

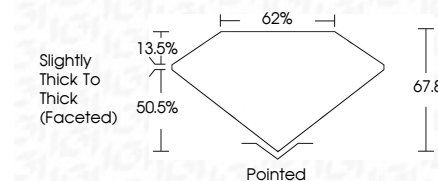
Red symbols indicate internal characteristics.  
Green symbols indicate external characteristics.

**COLOR**

D E F G H I J Faint Very Light Light

**CLARITY**

IF	VS <sup>1-2</sup>	VS <sup>1-2</sup>	SI <sup>1-2</sup>	I <sup>1-3</sup>
Internally Flawless	Very Very Slightly Included	Very Slightly Included	Slightly Included	Included



**ADDITIONAL GRADING INFORMATION**

Polish **EXCELLENT**  
Symmetry **EXCELLENT**  
Fluorescence **VERY SLIGHT**  
Inscription(s) **LG710590555**  
Comments: This Laboratory Grown Diamond was created by Chemical Vapor Deposition (CVD) growth process. Indications of post-growth treatment.



June 18, 2025  
IGI Report No LG710590555  
**CUSHION MODIFIED BRILLIANT**  
8.16 X 6.42 X 4.35 MM  
1.80 CARAT  
FANCY VIVID GREEN  
VS 1  
67.8%  
62%  
Slightly Thick To Thick (Faceted)  
Pointed  
EXCELLENT  
EXCELLENT  
VERY SLIGHT  
IGI LG710590555  
Comments: This Laboratory Grown Diamond was created by Chemical Vapor Deposition (CVD) growth process. Indications of post-growth treatment.