



ELECTRONIC COPY

LG710590209
Report verification at igi.org



June 10, 2025
IGI Report Number **LG710590209**
Description **LABORATORY GROWN DIAMOND**
Shape and Cutting Style **EMERALD CUT**
Measurements **8.18 X 5.85 X 3.94 MM**
GRADING RESULTS
Carat Weight **1.91 CARAT**
Color Grade **F**
Clarity Grade **VVS 2**

June 10, 2025
IGI Report Number **LG710590209**
Description **LABORATORY GROWN DIAMOND**
Shape and Cutting Style **EMERALD CUT**
Measurements **8.18 X 5.85 X 3.94 MM**

GRADING RESULTS

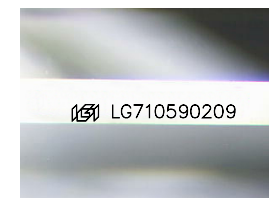
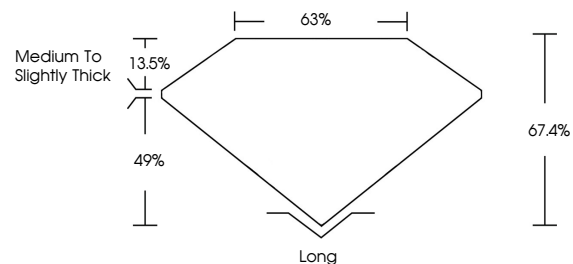
Carat Weight **1.91 CARAT**
Color Grade **F**
Clarity Grade **VVS 2**

ADDITIONAL GRADING INFORMATION

Polish **EXCELLENT**
Symmetry **EXCELLENT**
Fluorescence **NONE**
Inscription(s) **IGI LG710590209**

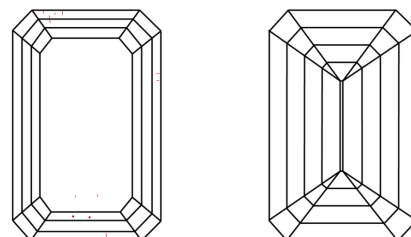
Comments: As Grown - No indication of post-growth treatment.
This Laboratory Grown Diamond was created by High Pressure High Temperature (HPHT) growth process.
Type II

PROPORTIONS



Sample Image Used

CLARITY CHARACTERISTICS



KEY TO SYMBOLS

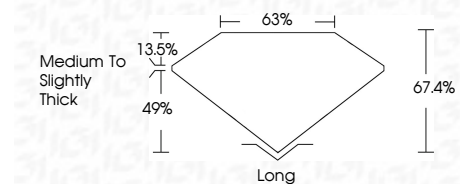
Red symbols indicate internal characteristics.
Green symbols indicate external characteristics.

COLOR

D E F G H I J Faint Very Light Light

CLARITY

IF	VS ¹⁻²	VS ¹⁻²	SI ¹⁻²	I ¹⁻³
Internally Flawless	Very Very Slightly Included	Very Slightly Included	Slightly Included	Included



ADDITIONAL GRADING INFORMATION

Polish **EXCELLENT**
Symmetry **EXCELLENT**
Fluorescence **NONE**
Inscription(s) **IGI LG710590209**
Comments: As Grown - No indication of post-growth treatment.
This Laboratory Grown Diamond was created by High Pressure High Temperature (HPHT) growth process.
Type II



IGI



June 10, 2025
IGI Report No LG710590209
EMERALD CUT
8.18 X 5.85 X 3.94 MM
1.91 CARAT
F
VVS 2
67.4%
63%
Medium to Slightly Thick
Long
EXCELLENT
EXCELLENT
NONE
IGI LG710590209

Comments: As Grown - No indication of post-growth treatment.
This Laboratory Grown Diamond was created by High Pressure High Temperature (HPHT) growth process.
Type II