



ELECTRONIC COPY

LG710590060 Report verification at igi.org



June 3, 2025 IGI Report Number LG710590060 Description LABORATORY GROWN DIAMOND Shape and Cutting Style EMERALD CUT Measurements 6.74 X 4.69 X 3.21 MM GRADING RESULTS Carat Weight 1.00 CARAT Color Grade D Clarity Grade INTERNALLY FLAWLESS

June 3, 2025 IGI Report Number LG710590060 Description LABORATORY GROWN DIAMOND Shape and Cutting Style EMERALD CUT Measurements 6.74 X 4.69 X 3.21 MM

GRADING RESULTS

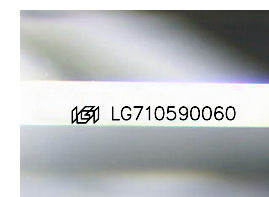
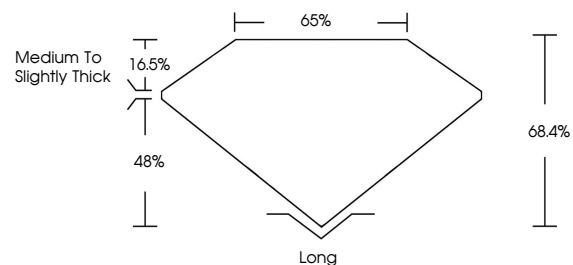
Carat Weight 1.00 CARAT Color Grade D Clarity Grade INTERNALLY FLAWLESS

ADDITIONAL GRADING INFORMATION

Polish EXCELLENT Symmetry EXCELLENT Fluorescence NONE Inscription(s) LG710590060

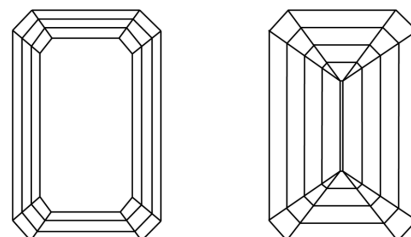
Comments: As Grown - No indication of post-growth treatment. This Laboratory Grown Diamond was created by High Pressure High Temperature (HPHT) growth process. Type II

PROPORTIONS



Sample Image Used

CLARITY CHARACTERISTICS



KEY TO SYMBOLS

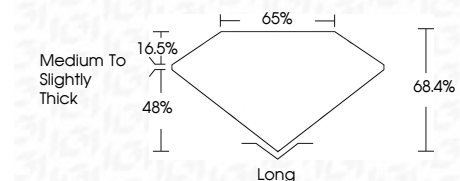
Red symbols indicate internal characteristics. Green symbols indicate external characteristics.

COLOR

D E F G H I J Faint Very Light Light

CLARITY

IF VS 1-2 VS 1-2 SI 1-2 I 1-3 Internally Flawless Very Very Slightly Included Very Slightly Included Slightly Included Included



ADDITIONAL GRADING INFORMATION

Polish EXCELLENT Symmetry EXCELLENT Fluorescence NONE Inscription(s) LG710590060 Comments: As Grown - No indication of post-growth treatment. This Laboratory Grown Diamond was created by High Pressure High Temperature (HPHT) growth process. Type II



June 3, 2025 IGI Report No LG710590060 EMERALD CUT 1.00 CARAT D LF 68.4% 65% Medium to Slightly Thick Long EXCELLENT EXCELLENT NONE NONE LG710590060 Comments: As Grown - No indication of post-growth treatment. This Laboratory Grown Diamond was created by High Pressure High Temperature (HPHT) growth process. Type II