



ELECTRONIC COPY

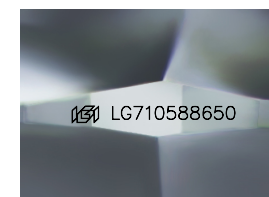
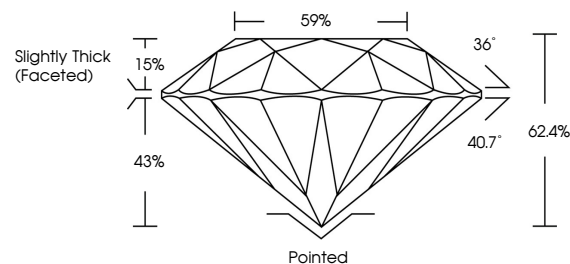
LG710588650
Report verification at igi.org



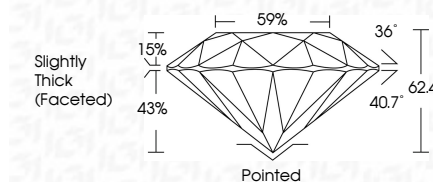
May 26, 2025
IGI Report Number **LG710588650**
Description **LABORATORY GROWN DIAMOND**
Shape and Cutting Style **ROUND BRILLIANT**
Measurements **6.76 - 6.82 X 4.24 MM**
GRADING RESULTS
Carat Weight **1.24 CARAT**
Color Grade **FANCY VIVID GREEN**
Clarity Grade **SI 2**
Cut Grade **EXCELLENT**

May 26, 2025
IGI Report Number **LG710588650**
Description **LABORATORY GROWN DIAMOND**
Shape and Cutting Style **ROUND BRILLIANT**
Measurements **6.76 - 6.82 X 4.24 MM**
GRADING RESULTS
Carat Weight **1.24 CARAT**
Color Grade **FANCY VIVID GREEN**
Clarity Grade **SI 2**
Cut Grade **EXCELLENT**

PROPORTIONS



Sample Image Used



ADDITIONAL GRADING INFORMATION
Polish **EXCELLENT**
Symmetry **EXCELLENT**
Fluorescence **NONE**
Inscription(s) **IGI LG710588650**

Comments: This Laboratory Grown Diamond was created by High Pressure High Temperature (HPHT) growth process. Indications of post-growth treatment.

COLOR

D E F G H I J Faint Very Light Light

CLARITY

IF VS¹⁻² VS¹⁻² SI¹⁻² I¹⁻³

Internally Flawless Very Very Slightly Included Very Slightly Included Slightly Included Included

ADDITIONAL GRADING INFORMATION

Polish **EXCELLENT**
Symmetry **EXCELLENT**
Fluorescence **NONE**
Inscription(s) **IGI LG710588650**

Comments: This Laboratory Grown Diamond was created by High Pressure High Temperature (HPHT) growth process. Indications of post-growth treatment.



IGI

May 26, 2025
IGI Report No LG710588650
ROUND BRILLIANT
6.76 - 6.82 X 4.24 MM
1.24 CARAT
FANCY VIVID GREEN
SI 2
EXCELLENT
62.4%
59%
Slightly Thick (Faceted)
Pointed
EXCELLENT
EXCELLENT
NONE
IGI LG710588650
Comments: This Laboratory Grown Diamond was created by High Pressure High Temperature (HPHT) growth process. Indications of post-growth treatment.