

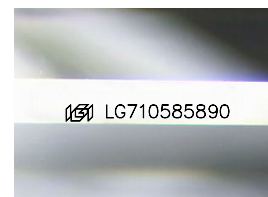
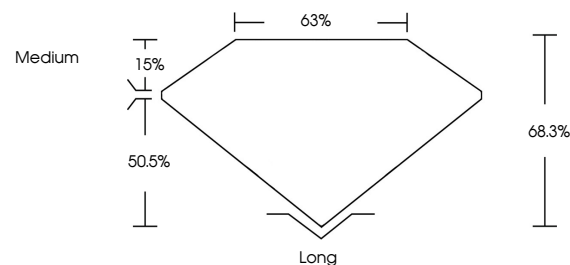


ELECTRONIC COPY

LABORATORY GROWN DIAMOND REPORT

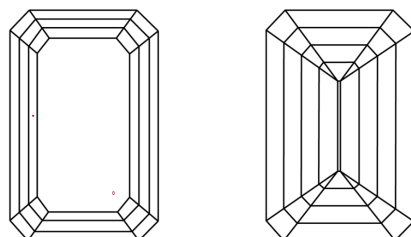
LG710585890
Report verification at igi.org

PROPORTIONS



Sample Image Used

CLARITY CHARACTERISTICS



KEY TO SYMBOLS

Red symbols indicate internal characteristics.
Green symbols indicate external characteristics.

COLOR

D E F G H I J Faint Very Light Light

CLARITY

IF VWS¹⁻² VS¹⁻² SI¹⁻² I¹⁻³

Internally Flawless	Very Very Slightly Included	Very Slightly Included	Slightly Included	Included
------------------------	--------------------------------	---------------------------	----------------------	----------

LABORATORY GROWN DIAMOND REPORT



May 24, 2025

IGI Report Number **LG710585890**Description **LABORATORY GROWN DIAMOND**

Shape and Cutting Style **EMERALD CUT**

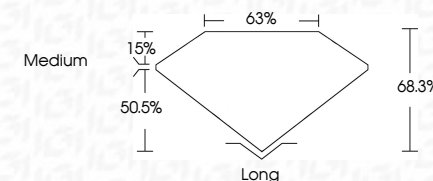
Measurements **6.87 X 4.92 X 3.36 MM**

GRADING RESULTS

Carat Weight **1.10 CARAT**

Color Grade D

Clarity Grade VS 1



ADDITIONAL GRADING INFORMATION

Polish **EXCELLENT**Symmetry **EXCELLENT**Fluorescence **NONE**Inscription(s) LG710585890

Comments: This Laboratory Grown Diamond was created by Chemical Vapor Deposition (CVD) growth process.
Type IIa



© IGI 2020, International Gemological Institute

FD - 10 20



THIS DOCUMENT WAS PRODUCED WITH THE FOLLOWING SECURITY MEASURES: SPECIAL DOCUMENT PAPER, INK SCREENS, WATERMARK, BACKGROUND DESIGNS, HOLOGRAM AND OTHER SECURITY FEATURES NOT LISTED AND DO EXCEED DOCUMENT SECURITY INDUSTRY GUIDELINES

www.igi.org

May 24, 2025
GJ Report No. 1G710585890

Report No. 15710585690	1.10 CARAT
EMERALD CUT	D
4.87 X 4.92 X 3.36 MM	VS 1
	68.3%
	65%
	Medium
	Long
	EXCELLENT
	EXCELLENT
	NONE
	see certificate

Comments:
This Laboratory Grown Diamond was created by Chemical Vapor Deposition (CVD) growth process.